



Always dispose of unwanted tools, accessories and packaging materials in an environmentally friendly manner.



In observance of European Directive 2012/19/EU on Waste Electrical and Electronic Equipment (WEEE) and its implementation in accordance with national law, electrical goods that have reached the end of their life must be collected separately and returned to an environmentally compatible recycling facility.

Do not dispose of electrical goods with domestic waste materials as inappropriate disposal may cause potential hazards to the environment and human health.

For further information, please contact your local authority or the retailer from whom you purchased the product.



This product does not contain any restricted substances in concentrations and applications which are banned by the European RoHS2 Directive.

DECLARATION OF CONFORMITY

We hereby certify that **KOBE EXTENDED SPINDLE DIE GRINDER**

(ORDER CODE: **KBE-270-2040N**)

complies with all the relevant provisions of the

Machinery Directive: 2006/42/EC

Standards Applied: EN ISO 12100:2010, EN ISO 11148-9:2011,
ISO 28927-12 & EN ISO 15744:2008

Signed:



Date: 1st June 2017

Name: Keith Read

Position: HSQE Manager.

KOBE TOOLS

THE KENNEDY GROUP LTD, WIGSTON, ENGLAND, LE18 2FS.



QUALITY GUARANTEE & WARRANTY

KOBE INDUSTRIAL AIR TOOLS carry a one year manufacturer's warranty.

KOBE INDUSTRIAL AIR TOOLS are designed & manufactured
to the highest standards & specifications

Assuring the quality and performance required by all sectors of industry.

KOBE INDUSTRIAL AIR TOOLS are fully guaranteed against
faulty materials & workmanship.

Should they be found to be defective, they will either be repaired or replaced
free of charge (fair wear and tear and/or misuse excepted).

Please retain supplier invoice as proof of purchase.

KOBETM

PROFESSIONAL AIR TOOLS

EXTENDED SPINDLE DIE GRINDER

MODEL:
GES2506L

ORDER CODE:
KBE-270-2040N



- Safety Lever Throttle
- For Extra Reach in 'Hard to Get at' Areas
- Extended Spindle Housing Allows two-Handed Operation
- Front Exhaust
- 1/2HP Motor



WARNING: THE SAFETY INFORMATION GIVEN INSIDE MUST BE
READ AND UNDERSTOOD BY ANY PERSON USING, INSTALLING,
REPAIRING OR MAINTAINING THESE PRODUCTS.

OPERATOR'S MANUAL

Please retain this information for future reference.

You have purchased a quality product that is designed for high performance and long service life. If correct use, safety and maintenance procedures are observed this machine will last for many years.

KOBE INDUSTRIAL AIR TOOLS have been specifically designed to help you work **SAFELY** and **EFFICIENTLY**. Your care and good judgement are the best protection against injury, but always ensure that the appropriate safety equipment is worn. All possible hazards cannot be covered here, but the most important ones have been highlighted.

- Always adhere to the processes and safety warnings, which are stated in the instruction manual.

GENERAL OPERATING HAZARDS

- Always ensure all users are physically able and competent to handle the size, weight and power of the tools and have received appropriate training to perform the task.
- Always avoid accidental starting of the tool by disconnecting it before replacing accessories or repairing.
- Always be aware of the tool rundown time.
- Never allow routine to lead to mistakes.
- Never operate if any parts are missing or damaged.
- Never allow untrained persons to operate the tool.

WORKPLACE HAZARDS

- Always ensure your working area is clean and well lit.
- When working at height make sure that the tool is safely secured and be aware of objects falling below. Make sure that no persons are working directly below the working area.
- Do not operate in explosive atmosphere, for instance extreme dust, gases and liquids.
- Keep children and bystanders away while operating the tool. Distractions can cause you to lose control.
- Never run the tool in areas exposed to water or in damp conditions.

PERSONAL PROTECTION

- Always wear approved eye protection during operation. Use safety glasses or goggles which conform to BSEN136 or CE equivalent that provide protection from the front and side. The operator of the power tool is responsible for following accepted eye, face, respiratory, hearing and body protection.
- Always ensure that all long hair and loose clothing, ties, scarves, jewellery, etc., are secured or removed.

- Always consult a doctor if numbness, tingling, pain or whitening of the skin occurs. Repetitive work motions, awkward positions and exposure to vibration can cause "Repetitive Strain Injuries".

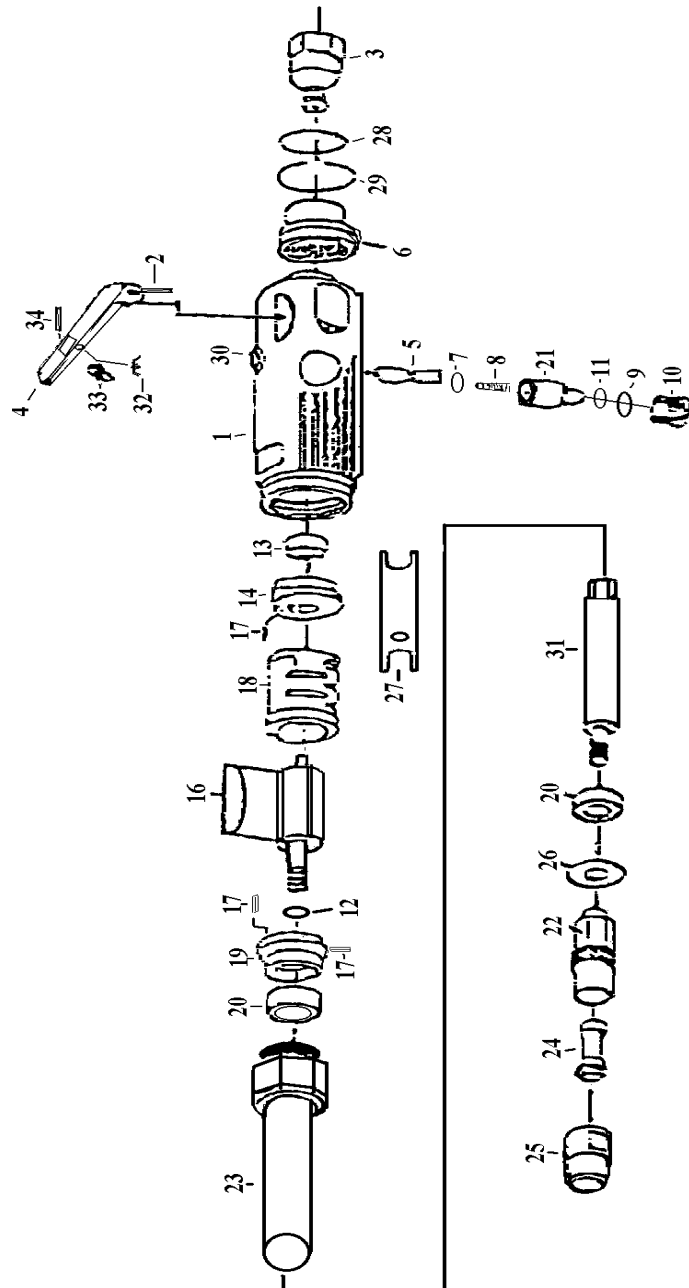
- When operating the tool stay alert and use common sense, especially when it comes to working at height. Be aware of what's below you.
- Do not overreach. Keep a proper balance and footing at all times.
- Do not use the tool if under the influence of alcohol, drugs or medication.

SPECIFIC SAFETY INSTRUCTIONS

- Always ensure all accessories are rated to the "Free" speed of the air tool and intact before fitting or using.
- Always use air tool attachments that are in good condition and are designed to be used with the tool.
- Always be aware of the risk of crushing between the tool and the workpiece due to sudden movement or reaction forces.
- Always shut off air supply, drain hose of air pressure and disconnect tools from air supply when not in use, before changing accessories or when making repairs.
- Never apply additional or over excessive force to the air tool.

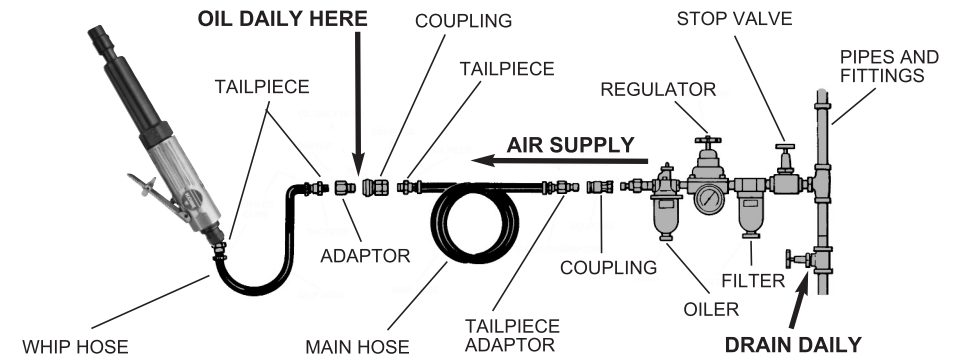
No.	Order Code	Description
21	KBE-298-2050S	Air Regulator
22	KBE-298-2053S	Spindle Chuck
23	KBE-298-3055S	Extension Housing
24	KBE-280-0070A	Collet 6mm
25	KBE-280-0067A	Collet Nut
26	KBE-298-3058S	Bakelite Washer
27	KBE-280-0085A	Spanner
28	KBE-298-1978S	O-Ring
29	KBE-298-1960S	Retaining Ring
30	KBE-298-2071S	Bushing
31	KBE-298-3046S	Extension Shaft
32	KBE-298-1867S	Spring
33	KBE-298-1870S	Safety Bar
34	KBE-298-1873S	Spring Pin
Optional Accessories Available		
	KBE-280-0073A	Collet 3mm
	KBE-280-0076A	Collet 1/4"
	KBE-280-0079A	Collet 1/8"

No.	Order Code	Description
1	KBE-298-1876S	Motor Housing
2	KBE-298-1999S	Lever Pin
3	KBE-298-1882S	Air Inlet
4	KBE-298-1789S	Safety Throttle Lever
5	KBE-298-2005S	Valve Stem
6	KBE-298-1891S	Exhaust Sleeve
7	KBE-298-2008S	O-Ring
8	KBE-298-2011S	Valve Spring
9	KBE-298-2014S	O-Ring
10	KBE-298-2017S	Valve Screw
11	KBE-298-2020S	O-Ring
12	KBE-298-2023S	Spacer
13	CES-298-0625N	Bearing
14	KBE-298-3049S	Rear End Plate
15	KBE-298-1918S	Rotor
16	KBE-298-1921S	Rotor Blades (4)
17	KBE-298-2038S	Pin
18	KBE-298-1924S	Cylinder
19	KBE-298-3052S	Front End Plate
20	CES-298-0609B	Bearing



MODEL NUMBER	GES2506L
FREE SPEED	25,000rpm
COLLET SIZE	6mm
AIR INLET THREAD	1/4NPT
AIR HOSE SIZE (ID)	10mm
AIR PRESSURE	90PSI
AIR CONSUMPTION	4CFM*
OVERALL LENGTH	248mm
WEIGHT	0.85kg

*Based on 15 second cycle per minute average use.



1. For optimal results you should incorporate a regulator, oiler and an inline filter.
2. If you are not using an automatic lubricating system, before operating the tool, add a few drops of Pneumatic Tool Oil to the air-line connection. Add more after each hour of constant using.
3. Do not exceed maximum air pressure of 90 PSI/ 6.2 bar or as stated on tool nameplate.



WARNING! BEFORE ATTEMPTING TO USE THIS PRODUCT, MAKE SURE YOU ARE FAMILIAR WITH ALL OPERATING AND SAFETY INSTRUCTIONS.

1. Use support handle or method to secure and support the work piece to a stable platform.
2. Do not force the tool. Use the correct tool for your application. Using the correct tool which is specifically designed for a select job will provide better tool performance and make the job easier.
3. Disconnect the air supply before making any adjustments, changing accessories, or storing the tool. Always disconnect the air supply before performing any inspection, maintenance, or tool cleaning.
4. Use only accessories recommended by the manufacturer for your model.
5. When using a tool that is designed to have a guard, the guard should be in place to provide protection from flying debris, grinding residue or sparks.
6. Do not leave the tool unattended when it is connected to an air supply.
7. Use compressed air only.

Check the position of the reversing mechanism before operating the tool so as to be aware of the direction of rotation when operating.

Before switching on the tool, make sure that the grinding stone or rotating file is correctly assembled and properly tightened.

ASSEMBLY OF THE GRINDING STONE/ ROTATING FILE

The die grinder must be disconnected from the compressed air supply. Loosen the collet, then put the shank of grinding stone or rotating file in the collet as deep as possible. Tighten it securely use the two wrenches included with the grinder.



WARNING!

- **ALWAYS** use the right tool for the job - DO NOT improvise by using accessories not designed for the tool or job.
- **ALWAYS** inspect the air tool for cracks or excessive wear before connecting and during use.
- Be careful not to over tighten fasteners.

A competent person must disassemble and inspect higher wear parts periodically if the tool is used every day or if there is a noticeable drop in the tool performance. Any damaged or worn parts must be replaced. Your 12 month warranty could become void if the tool is unnecessarily dismantled and damage is caused. If you are unsure about dismantling the tool, please return it to your local Kobe agent.

The use of other than genuine Kobe replacement parts may result in safety hazards, decreased tool performance, increased maintenance and voiding of warranty.

Mineral spirits are recommended when cleaning the tool and its parts. DO NOT clean with any solvents or oils containing acids, esters, ketones, chlorinated hydrocarbons or nitro carbons. DO NOT use chemicals that have a low flash point. For spare parts or servicing please contact your local Kobe agent.

LUBRICATION

Lubricate the tool daily with a high grade of air tool oil. If no air line oiler is used, run a teaspoon of oil through the tool. The oil can be squirted into the tool air inlet, or into the hose at the nearest connection to the air supply, prior to operating the tool. The rust inhibitive oil is acceptable for air tools.

A comprehensive repair and service facility is available through your local Kobe agent.

