

# Pro'sKit®



PT-1366U

**3.6V CORDLESS ELECTRIC SCREWDRIVER**



**User's Manual**



**1<sup>st</sup> Edition**

©2024 Copyright by Prokit's Industries Co., Ltd.

# GENERAL POWER TOOL SAFETY WARNINGS



## WARNING:

**Read all safety warnings, instructions, illustrations, and specifications provided with this power tool. Failure to follow all instructions listed below may result in electric shock, fire and/or serious injury.**

Save all warnings and instructions for future reference. The term “power tool” in the warnings refers to your mains operated (corded) power tool or battery-operated (cordless) power tool.

### **Work area safety.**

1. Always keep work area clean and bright. Cluttered and dark areas easily induce accidents.
2. Do not operate power tools on explosive atmospheres, such as flammable liquids, gases, or dust. Power tools may cause sparks to ignite the dust of fumes.
3. Keep children and bystanders away while operating a power tool. Distractions could cause you to lose control.

### **Electric safety**

1. Power tool plugs must match the outlet. Never modify the plug in any way. Do not use any adapter plugs with earthed (grounded) power tools. Unmodified plugs and matching outlets will reduce risk of electric shock.
2. Avoid body contact with earthed or grounded surfaces such as pipes, radiators, ranges, and refrigerators. It will increase the risk of electric shock if your body is earthed or grounded.
3. Do not expose power tools to rain or wet conditions. Water entering a power tool will increase the risk of electric shock.
4. Do not abuse the cord. Never use the cord for carrying, pulling, or unplugging the power tool. Keep cord away from heat, oil, sharp edges or moving parts. Damaged or entangled cords will increase the risk of electric shock.
5. When operating a power tool outdoor, use a probable extension cord suitable for outdoor use. Use a probably cord suitable for use outdoor will reduce the risk of electric shock.’
6. If operating a power tool in a damp location is un - avoidable, use a ground fault circuit interrupter (GFCI) protected supply. Use of a GFCI reduces the risk of electric shock.

## **Personal safety**

1. Stay alert, watch out what you are doing and use common sense when operating a power tool. Do not use a power tool while you are tired or under the influence of drugs, alcohol, or medication. A moment of inattention while operating power tools may result in serious personal injury.
2. Use personal protective equipment. Always wear eye protection. Always use protective equipment such as dust mask, non-skid safety shoes, hard hat, or hearing protection for appropriate conditions will reduce personal injuries.
3. Prevent unintentional starting. Ensure the switch is in the off position before connecting to power source and/or battery pack, picking up or carrying the tool. Carrying power tools with your finger on the switch or energizing power tools that have the switch on invites accidents.
4. Remove any adjusting key or wrench before turning on the power tool. A wrench or key left attached part of the power tool may result in personal injury.
5. Do not overreach. Keep proper footing and balance at all the times; it will enable you get better control once power tool in unexpected situations.
6. Dress properly. Do not wear loose clothing. Keep your hair, clothing, and gloves away from working parts. Loose clothes or long hairs can be caught in working parts.
7. If devices are provided for the connection of dust extraction and collection facilities, ensure these are connected and properly used. Use of these devices can reduce dust-related hazards.
8. Do not let familiarity gained from frequent use of tools allow you to become complacent and ignore tool safety principles. A careless action can cause severe injury within a fraction of a second.
9. Do not wear loose clothing or jewelry. Contain long hair. Loose clothes, jewelry, or long hair can be drawn into air vents.
10. Do not use on a ladder or unstable support. Stable footing on a solid surface enables better control of the power tool in unexpected situations.

## **Power tool use and care**

1. Do not force the power tool. Correctly use the power tool for your application. To correctly use the power tool will get the better performance and more safety.
2. Do not use the power tool if the switch doesn't turn it on and off. Any power tool cannot be controlled with the switch is dangerous and must

- be repaired.
3. Disconnect the plug from the power source and/or remove the battery pack, if detachable, from the power tool before making any adjustments, changing accessories, or storing power tools. Such preventive safety measures reduce the risk of starting the power tool accidentally.
  4. Store idle power tools out of the reach of children and do not allow persons unfamiliar with the power tool or these instructions to operate the power tool. Power tools are dangerous in the hands of untrained users.
  5. Maintain power tools. Check for misalignment of binding of moving parts, breakage of parts and any other condition that may affect the operation of power tools. If damaged, send the power tool to repair before use. Many accidents are caused by poorly maintained power tools.
  6. Keep cutting tools sharp and clean. Properly maintained cutting tools with sharp cutting edges are less likely to bind and are easier to control.
  7. Use the power tool, accessories, and tool bits, etc., in accordance with these instructions and in the manner intended for the power tool, considering the working conditions and the work to be performed. Use of the power tool for operations different from intended could result in a hazardous situation.
  8. Keep handles and grasping surfaces dry, clean, and free from oil and grease. Slippery handles and grasping surfaces do not allow for safe handling and control of the tool in unexpected situations.

### **Battery tool use and care**

1. Recharge only with the charger specified by the manufacturer. A charger that is suitable for one type of battery pack may create a risk of fire when used with another battery pack.
2. Use power tools only with specifically designated battery packs. Use of any other battery packs may create a risk of injury and fire.
3. When battery pack is not in use, keep it away from other metal objects, like paper clips, coins, keys, nails, screws, or other small metal objects, that can make a connection from one terminal to another. Shorting the battery terminals together may cause burns or a fire.
4. Under abusive conditions, liquid may be ejected from the battery; avoid contact. If contact accidentally occurs, flush with water. If liquid contacts eyes, additionally seek medical help. Liquid ejected from the battery may cause irritation or burns.
5. Do not use a battery pack or tool that is damaged or modified. Damaged or modified batteries may exhibit unpredictable behavior resulting in fire,

- explosion, or risk of injury.
6. Do not expose a battery pack or tool to fire or excessive temperature. Exposure to fire or temperature above 130°C (265°F) may cause explosion.
  7. Follow all charging instructions and do not charge the battery pack or tool outside the temperature range specified in the instructions. Charging improperly or at temperatures outside the specified range may damage the battery and increase the risk of fire.

### **Service**

- Have your power tool serviced by a qualified repair person using only identical replacement parts. This will ensure that the safety of the power tool is maintained.
- Never service damaged battery packs. Service of battery packs should only be performed by the manufacturer or authorized service providers.

## **SCREWDRIVER SAFETY WARNINGS**

1. Hold power tool by insulated gripping surfaces, when performing an operation where the fastener may contact hidden wiring or its own cord. Fasteners contacting a “live” wire may make exposed metal parts of the power tool “live” and could give the operator an electric shock.
2. Know your power tool. Read operator’s manual carefully. Learn its applications and limitations, as well as the specific potential hazards related to this power tool. Following this rule will reduce the risk of electric shock, fire, or serious injury.
3. Always wear eye protection with side shields marked to comply with ANSI Z87.1 when assembling parts, operating the tool, or performing maintenance. Following this rule will reduce the risk of serious personal injury.
4. Protect your lungs. Wear a face or dust mask if the operation is dusty. Following this rule will reduce the risk of serious personal injury.
5. Protect your hearing. Wear hearing protection during extended periods of operation. Following this rule will reduce the risk of serious personal injury.
6. Battery tools do not have to be plugged into an electrical outlet; therefore, they are always in operating condition. Be aware of possible hazards when not using your battery tool or when changing accessories. Following this rule will reduce the risk of electric shock, fire, or serious personal injury.

7. Do not place battery tools or their batteries near fire or heat. This will reduce the risk of explosion and possibly injury.
8. Do not crush, drop, or damage battery pack. Do not use a battery pack or charger that has been dropped or received a sharp blow. A damaged battery is subject to explosion. Properly dispose of a dropped or damaged battery immediately.
9. Batteries can explode in the presence of a source of ignition, such as a pilot light. To reduce the risk of serious personal injury, never use any cordless product in the presence of open flame. An exploded battery can propel debris and chemicals. If exposed, flush with water immediately.
10. Under extreme usage or temperature conditions, battery leakage may occur. If liquid meets your skin, wash immediately with soap and water. If liquid gets into your eyes, flush them with clean water for at least 10 minutes, then seek immediate medical attention. Following this rule will reduce the risk of serious personal injury.
11. Save these instructions. Refer to them frequently and use them to instruct others who may use this tool. If you loan someone this tool, loan them these instructions also.

## **SAFETY RULES FOR CHARGER**



### **WARNING:**

**READ AND UNDERSTAND ALL INSTRUCTIONS.** Failure to follow all instructions listed below, may result in electric shock, fire and/or serious personal injury.

1. Before using charger, read all instructions and cautionary markings in this manual, on charger, battery, and product using battery to prevent misuse of the products and possible injury or damage.
2. Do not use charger outdoors or expose to wet or damp conditions. Water entering charger will increase the risk of electric shock.



### **WARNING:**

**Do not charge a battery that is wet or has been wet or exposed to liquids.**

1. Use of an attachment not recommended or sold by the charger manufacturer may result in a risk of fire, electric shock, or injury to persons. Following this rule will reduce the risk of electric shock, fire, or serious personal injury.
2. Do not charge battery in a damp or wet location. Do not use, store, or charge battery packs or products in locations where the temperature is less than 10°C (50°F) or more than 38°C (100°F) . Do not store outside


- or in vehicles.
3. Do not abuse cord or charger. Never use the cord to carry the charger. Do not pull the charger cord rather than the plug when disconnecting from receptacle. Damage to the cord or charger could occur and create an electric shock hazard. Replace damaged cords immediately.
  4. Make sure cord is located so that it will not be stepped on, tripped over, meet sharp edges or moving parts or otherwise subjected to damage or stress. This will reduce the risk of accidental falls, which could cause injury, and damage to the cord, which could result in electric shock.
  5. Keep cord and charger from heat to prevent damage to housing or internal parts.
  6. Do not let gasoline, oils, petroleum-based products, etc. meet plastic parts. They contain chemicals that can damage, weaken, or destroy plastic.
  7. An extension cord should not be used unless necessary. Use of improper extension cord could result in a risk of fire and electric shock. If extension cord must be used, make sure:
    - a) That pins on plug of extension cord are the same number, size, and shape as those of plug on charger.
    - b) That extension cord is properly wired and in good electrical condition.
    - c) That wires size is large enough for AC ampere rating of charger as specified below:
  8. Do not operate charger with a damaged cord or plug, which could cause shorting and electric shock. If damaged, have the charger replaced by an authorized serviceman.
  9. Do not operate charger if it has received a sharp blow, been dropped, or otherwise damaged in any way. Take it to an authorized serviceman for electrical check to determine if the charger is in good working order.
  10. Do not disassemble charger. Take it to an authorized serviceman when service or repair is required. Incorrect reassembly may result in a risk of electric shock or fire.
  11. Unplug charger from outlet before attempting any maintenance or cleaning to reduce the risk of electric shock.
  12. Disconnect charger from the charger when not in use. This will reduce the risk of electric shock or damage to the charger if metal items should fall into the opening. It also will help prevent damage to the charger during a power surge.
  13. Risk of electric shock. Do not touch uninsulated portion of output connector or uninsulated battery terminal.
  14. Save these instructions. Refer to them frequently and use them to

instruct others who may use this tool. If you loan someone this tool, loan them these instructions also to prevent misuse of the product and possible injury.




## IMPORTANT SAFETY INSTRUCTIONS



1. SAVE THESE INSTRUCTIONS - DANGER - TO REDUCE RISK OF FIRE OR ELECTRIC SHOCK, CAREFULLY FOLLOW THESE INSTRUCTIONS.

This manual contains important safety and operating instructions for charger.





2. Before using charger, read all instructions and cautionary markings on charger, battery, and product using battery.
3.  **CAUTION:** To reduce the risk of injury, charge only lithium-ion rechargeable batteries. Other types of batteries may burst, causing personal injury or damage.

## SYMBOLS

The following signal words and meanings are intended to explain the levels of risk associated with this product.		
SYMBOLS	SIGNAL	MEANING
	DANGER:	Indicates a hazardous situation, which, if not avoided, will result in death or serious injury.
	WARNING:	Indicates a hazardous situation, which, if not avoided, could result in death or serious injury.
	CAUTION:	Indicates a hazardous situation, that, if not avoided, may result in minor or moderate injury.
	NOTICE:	(Without Safety Alert Symbol) Indicates information considered important, but not related to a potential injury (e.g. messages relating to property damage).

The following symbols may be used on this product. Please study them and learn their meaning. Proper interpretation of these symbols will allow you to operate the product better and safer.		
SYMBOLS	NAME	DESIGNATION/EXPLANATION
	Safety Alert	Indicates a potential personal injury hazard.
	Read Operator's Manual	To reduce the risk of injury, user must read and understand operator's manual before using this product.



	Eye Protection	Always wear eye protection with side shields marked to comply with ANSI Z87.1.
	Wet Conditions Alert	Do not expose to rain or use in damp locations.
	Wet Conditions Alert	Risk of fire and burns. Do not expose battery, battery compartment, or electronic components to rain, water, or liquids.
	Recycle Symbol	This product uses lithium-ion (Li-Ion) batteries. Local, state, or federal laws may prohibit disposal of batteries in ordinary trash. Consult your local waste authority for information regarding available recycling and/or disposal options.
V	Volts	Voltage
A	Amperes	Current
no	No Load Speed	Rotational speed, at no load
.../min	Per Minute	Revolutions, strokes, surface speed, orbits etc., per minute

## ASSEMBLY

### WARNING:

Do not use this product if it is not completely assembled or if any parts appear to be missing or damaged. Use of a product that is not properly and completely assembled or with damaged or missing parts could result in serious personal injury.

### WARNING:

Do not attempt to modify this product or create accessories or attachments not recommended for use with this product. Any such alteration or modification is misuse and could result in a hazardous condition leading to possible serious personal injury.

If any parts are damaged or missing, please contact the dealer.

## OPERATION

## WARNING:

Do not allow familiarity with products to make you careless. Remember that a careless fraction of a second is sufficient to inflict serious injury.

## WARNING:

Always wear eye protection with side shields marked to comply with ANSI Z87.1. Failure to do so could result in objects being thrown into your eyes resulting in possible serious injury.

## WARNING:

Do not use any attachments or accessories not recommended by the manufacturer of this product. The use of attachments or accessories not recommended can result in serious personal injury.









## APPLICATIONS

You may use this product for the purposes listed below:

- Driving screws with screwdriver bits.
- Light-duty drilling.

## Technical Data

Model No. PT-1366U	
Rated voltage	3.6V
Torque setting	7+1 Positions
Max. torque. Hard/soft	5.5 / 3.5N.m
Min. torque	0.2 N.m
No-load speed	320 rpm
Collet holder	1/4" (6.35mm)
Battery	Li-ion 3.6V 2000 mAh
Charging port	USB Type-C
Charging Time	3~5h
Free running time	~65min
Special function	LED Light

	Battery power status indicator
Size	Φ38x195mm
Accessories	25mm bits 24pcs:  PH1x2,PH2x2,PH3x2;  3.0,4.0,5.0;  PZ1,PZ2  T10x1,T15x2,T20x2;  3.0x2,4.0x2, 5.0x1  S0,S1,S2
	50mm bits 4pcs:  3.0,4.0  PH1, PH2
	Magnetic bits holder (50mm)
	USB Type-C Cable
working condition	0~35℃ (32~95°F) ; less than 80% RH
Storage environment	0~35℃ (32~95°F) ; less than 80% RH

## ILLUSTRATIONS



- 1.Type-C Charge port. 2. Battery charging & capacity indicator.  
 3.On/Off button. 4. Reverse rotate button. 5. Clockwise button.  
 6. Torque knob. 7. LED light. 8. Locking sleeve.

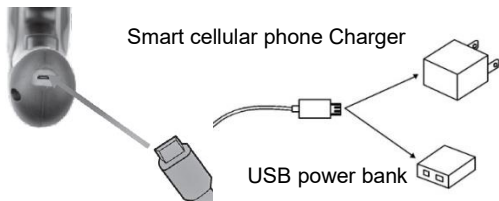
## TO CHARGE

- 1.Before first time use, or after a long period storage, please make full

charge first for better work efficiency.

2.Charging: Put the USB Type-C plug into the tool, another USB plug into the power bank, or other cell phone adaptor.

3.The charging indicator will be flash when in charging; after battery full changing the three green indicator will light on in same time.



- Please use smart phone charger, power bank, Pad charger for charging the power tool, please note output voltage within DC 5V 1~3A.
- Do not place charger in an area of extreme heat or cold. It will work best at normal room temperature.
- Remove the product from the charger once it is fully charged and ready for use.

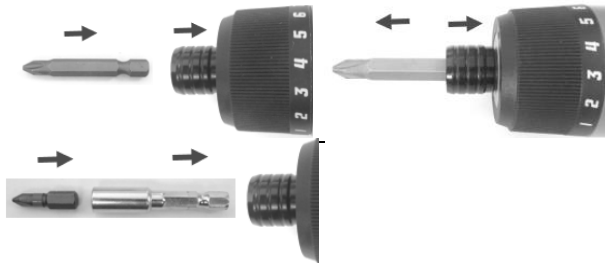
### Attaching and removing accessories

When performing any operation, such as changing tools or conducting maintenance, ensure the power tool is switched off.

Installing the accessory (bit): Pull back and firmly hold the locking sleeve. Insert the bit into the bit holder and then release the locking sleeve. Test its security by attempting to pull the bit and tool apart again gently, ensuring a firm fit before use.

Remove the accessory (bit): Pull back and firmly hold the locking sleeve. Remove the accessory bit from the chuck.

- Do not shake the tool or press the trigger when installing or remove the accessory.
- To avoid the tool damages, do not keep fastening or losing the screw over 3 seconds when the tool is out of power or block.
- When the motor is stopped, please stop operation to avoid any damage.



## Screw driving.

We recommend using self-centering screws (e.g. Torx screws, recessed head screws) designed for reliable working. Be sure to use a bit that matches the screw in shape and size. Set the torque, as described elsewhere in these operating instructions, to suit the size of screw.

## ON/OFF BUTTON

1. Press the "ON/OFF" button to turn on the device, and the battery indicator lights up for 3 seconds.
2. If all three lights on the battery indicator are illuminated when you turn on the device, this signifies that the battery is fully charged. If two lights are lit, it indicates that the battery level is low, but the device remains operational. However, if only one light is on, it suggests that the battery is severely depleted and requires immediate charging.

## DIRECTION OF ROTATION SELECTOR

1. Hold the tool firmly and place the bit at the point where the screw is to be driven.
2. Apply only enough pressure to keep driving the screw. Do not force the tool. Let the tool do the work.
3. Press the "ON/OFF" button to turn on the device.
4. Press the "◀" button causes the tool to rotate clockwise.
5. Pressing the "▶" button causes the tool to rotate counterclockwise.
6. When the device is turned on and there is no operation for 1 minute, it will automatically shut off.

## **⚠️ WARNING:**

Do not drive a screw where there is likely to be hidden wiring behind the

surface. Contact with a “live” wire will make exposed metal parts of the tool “live” and possibly shock the operator. If you must drive a screw where hidden wire may be present, always hold tool by insulated gripping surfaces (handle) when performing the operation to prevent a shock to the operator.

## MAINTENANCE



### WARNING:

To avoid serious personal injury, always ensure the tool is switched off before cleaning, performing any maintenance, or when storing the tool. Failure to heed this warning could result in serious personal injury or property damage.



### WARNING:

When servicing, use only identical replacement parts. Use of any other parts could create a hazard or cause product damage.

## GENERAL MAINTENANCE

Avoid using solvents when cleaning plastic parts. Most plastics are susceptible to damage from various types of commercial solvents and may be damaged by their use. Use clean clothes to remove dirt, dust, oil, grease, etc.



### WARNING:

Do not at any time let brake fluids, gasoline, petroleum- based products, penetrating oils, etc., meet plastic parts. Chemicals can damage, weaken, or destroy plastic which could result in serious personal injury.

## BATTERIES

This product is equipped with a lithium-ion rechargeable battery. Length of service from each charging will depend on the type of work you are doing. The battery in this product has been designed to provide maximum trouble-free life. However, like all batteries, it will eventually wear out.

To obtain the longest possible battery life, we suggest the following:

- Remove the product from the charger once it is fully charged and ready for use.

For product storage longer than 30 days:

- Store the product where the temperature is below 35°C (95°F).
- Store the product in a “50% discharged” condition.

## Repair

Please contact with the authorized service center if problems cannot be solved.

## Disposal and recycling

The unit is supplied in packaging to prevent its being damaged in transit. This packaging is raw material and can therefore be reused or can be returned to the raw material system. The unit and its accessories are made of various types of material, such as metal and plastic. Defective components must be disposed of as special waste. Ask your dealer or your local council.

## PT-1366U 鋰電池充電起子組操作手冊

### 重要安全須知

注意: 使用前, 請仔細閱讀本使用說明書, 在正確而安全的狀態下使用, 之後請妥善保管本使用說明書。

#### **工作環境**

1. 請保持工作環境整潔, 髒亂或黑暗的工作環境會導致工作時危險。
2. 請勿在容易起火、爆炸的場所附近使用; 例如, 易燃的液體、氣體或粉末。充電起子恐會產生火花而造成易燃物的燃燒。
3. 當使用充電起子時, 請遠離孩童或旁觀者, 以避免使用時不注意、疲勞時而導致的危險。

#### **電的安全**

1. 充電起子的插頭需符合插座。請勿自行修改插頭! 自行修改的插頭恐會造成危險或短路而起火。
2. 避免身體與有接地線或接地線表面物品接觸; 例如, 輸送管, 散熱器, 爐灶和冰箱, 以避免觸電, 而導致危險。
3. 請勿在雨中、濕漉地、潮濕場所使用工具, 水會進入充電起子而導致短路、冒煙或燃燒。
4. 請勿拿著電線搬運充電器或以拉扯電線方式從插座拔下插頭。請勿在火源、油、尖銳物品或會移動的物件附近使用, 以免觸電、冒煙或燃燒。

#### **個人使用**

1. 使用充電起子時, 請保持警覺並注意, 請勿在精神不濟、疲勞時、服用藥物後或喝酒後使用, 以避免造成個人或它人的危險或受傷。
2. 請使用個人防護設備 (例如, 口罩、安全鞋、安全帽、或防火衣物..等) 並配戴安全眼鏡, 以避免工作時造成個人受傷之疑慮。
3. 使用前, 請務必注意開關是否已在關閉狀態, 以避免在拿取時觸碰開關, 造成工具運轉。
4. 使用前, 請確認金屬物品已離開工具, 避免充電起子轉動時造成工具的損壞或個人受傷。

#### **工具使用及注意**

1. 請勿直接面對運轉中的充電起子, 並慎選正確的工具作業。正確的使用工具, 可幫助安全的作業及迅速的完成。
2. 請勿自行拆解充電起子, 以避免造成損壞。不正確的組裝會造成充電起子的損壞。若有任何問題, 請聯絡所購買之店家。
3. **注意:** 當充電起子電力耗盡時 (無法再鎖入或鬆脫螺絲), 請勿繼續按壓開關, 以免造成電池的老化。



4. 本充電起子並無離合器功能，當充電起子無法再鎖入或鬆脫螺絲時（扭力不足），務必停止使用，以避免造成工具內齒輪的崩壞或毀損。
5. 當開關無法使用（開或關）時，務必不要使用充電起子，以避免充電起子突然的運轉而導致受傷。
6. 在更換配件或維修時，請務必將開關關閉，以避免誤觸開關而導致受傷。
7. 存放充電起子時，請務必存放於嬰、幼兒無法拿取之地方，以避免嬰、幼兒誤觸而受傷。
8. 在維修充電起子時，請務必將可能誤觸充電起子開關或運轉的物品移除，以避免再維修時突然的運轉而導致受傷。
9. 請依照使用說明書確實安裝，以免脫落導致受傷。請以柔軟布料擦拭，請勿使用濕布、稀釋液或溶劑等揮發性物品。
10. 在安裝配件時，請務必詳讀說明書的操作方式，以避免不正確的安裝而導致充電起子的損壞及使用者受傷。
11. 使用時請勿過度晃動機子，以免造成充電起子的不良。
12. 孩童不可使用或玩此工具。
13. 充電起子若長時間未使用時，務必請每三個月定期做充電一次，以避免造成電池鈍化，而無法使用。

## **充電器安全須知**

1. 充電前，請詳讀安全須知。
2. **注意：**充電務必使用合格的充電器和充電線。請勿使用不適合或不同規格的充電器，以避免電池的短路或起火。
3. **注意：**不可於充電中同時使用工具，以免造成電池的快速老化。
4. **注意：**充電時間不可超過**四**小時，以免造成電池的老化。
5. 請勿使用非原廠生產的整組配件的產品或充電器，以避免起火、觸電或對人造成危險及受傷。
6. 請勿將液體倒入或接觸充電器，以避免造成充電器短路、起火或損壞。
7. 請勿在充電器上方放置物品，恐會造成充電器溫度過高且遠離發熱物品或火源。
8. 拔除充電器插頭時，請手持插頭拔除，請勿拉扯電線，以避免電線斷裂。
9. 請慎選電線不會被踐踏、拉扯等受損之充電場所，以免觸電或短路導致起火。
10. 盡量避免使用延長線，若必需使用，請慎選並定期檢查，損壞時須置換，以免因觸電或短路而受傷。
11. 請勿使用已損壞、破裂或摔過的充電器，以避免短路而受傷。請將有問題之充電器由所購買之經銷商檢查或維修。
12. 當充電電源線有損壞時，請將有問題之產品，由所購買之經銷商檢查或維修。
13. 請依說明書上標示之電源。請勿使用直流電源或引擎發電機，以免因異常發熱而導致火災。
14. 請勿自行拆解充電器，以避免造成損壞。不正確的組裝會造成充電器的短路或起火。若有任何問題，請聯絡所購買之經銷商。
15. 請在 0°C~+35°C (32°F~95°F) 範圍內充電，放電溫度 0°C~+35°C (32°F~95°F)，儲存溫

度 0°C ~35°C (32°F~95°F)。

- 當電池處於高溫狀態，電解液會產生氣體，電極片中樹脂粘接劑會發生質變，而使電池逐漸老化與衰退，甚至短期失效。
- 當電池處於低溫狀態，電解液會凝固，內阻會無窮大，電池將無法使用，且無法充電。
- 當電池處於高溫狀態，電解液會產生氣體，電極片中樹脂粘接劑會發生質變而使電池逐漸老化與衰退，甚至短期失效。

## 使用說明

### 產品規格：

型號. PT-1366U	
電壓	3.6V
扭矩調節	7+1 檔
最大扭矩（硬/軟扭矩）	5.5 / 3.5N.m
最小扭矩	0.2 N.m
轉速（無負載）	320 轉/分鐘
批頭座規格	1/4 " (6.35mm)
電池	Li-ion 3.6V 2000 mAh
充電介面	USB Type-C
充電時間	3~5h
空載轉動時間	~65min
特殊功能	LED 輔助照明
	電池電量指示
產品尺寸	Φ38x195mm
配件	25mm 螺絲批頭 24pcs:

	+ PH1x2,PH2x2,PH3x2; - 3.0,4.0,5.0 ; * PZ1,PZ2 * T10x1,T15x2,T20x2 ; ● 3.0x2,4.0x2, 5.0x1 ■ S0,S1,S2
	50mm 螺絲批頭 4pcs: - 3.0,4.0 + PH1, PH2
	轉接頭 (50mm)
	USB Type-C 充電線
工作環境	0~35°C (32~95°F) ; less than 80% RH
儲存環境	0~35°C (32~95°F) ; less than 80% RH

## 產品外觀

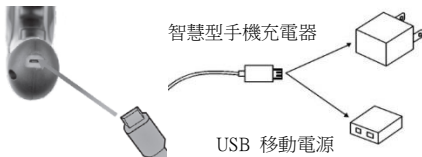


1. Type-C 充電插座
2. 充電/電池電量指示 LED
3. 開關
4. 逆時針旋轉按鍵
5. 順時針旋轉按鍵
6. 扭矩調節杯
7. 輔助照明 LED
8. 快脫式批頭座

## 充電說明

為保證您的工作順利，新產品使用前或長時間不用，再次使用前必須充滿電後才可使用。

充電：將USB Type-C插頭插入產品Type-C插座，另一端連接充電器USB介面，充電器插入電源插座，充電時，LED指示燈閃爍，充電完成後三個LED同時點亮。



注意：

\*充電器必須使用輸出DC 5V 1~3A電源充電器，如智慧型手機充電器或行動電源。

\* iPhone/iPad/iPod (蘋果) 使用者，請使用市面上標準或隨貨附上的 USB Type-C 充電線充電。

\*不可長時間為本產品充電，充電時間不可超過4小時。否則，可能引起產品電池漏液或爆炸等危險！

**注意：請勿使用桌上型或筆記型電腦充電，以免造成電腦的損壞。**

## 產品使用指南

### 1. 起子頭/鑽尾配件的安裝與取下

**安裝：**將快脫式夾頭卡環向下壓，然後將螺絲批頭插入夾頭座，鬆開卡環自動鎖住批頭；請檢批頭確實插入並鎖緊。

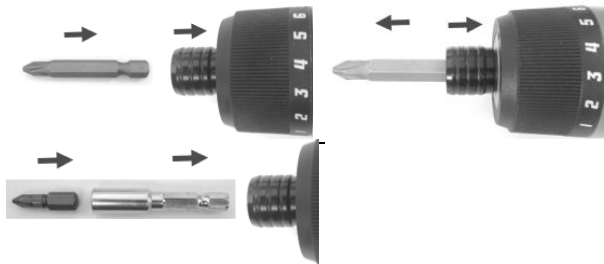
**取下：**將快脫式夾頭卡環向下壓，然後將螺絲批頭拉出。

**\*\*作業前，請確認起子頭是否安裝正確。**

**\*\*作業中請勿搖動起子，以免發生危險。**

**\*\*安裝、取下起子頭/鑽尾時，請勿壓按開關，以免因突然運轉而導致受傷。**

**\*\*請勿一面運轉電動起子一面更換起子頭/鑽尾。**



### 2. 開關及正/反轉的使用

按開關鍵，LED 電池指示燈點亮，約 3 秒後熄滅；

電池電量顯示：3 個 LED 指示燈都亮，表示電池電量充足；2 個 LED 燈亮，表示電池電量不足，但可以使用；若只有一個指示燈亮，表示電池電量嚴重不足，需要充電。

操作：按開關鍵，然後按“◀”或“▶”鍵，電批順時針或逆時針旋轉；按鍵為觸發式按鍵，按則開始轉動，放則停止。

開機狀態，1分鐘內無操作，則電批自動關機。按開關鍵可重新啟動工作。

**\*\*壓按開關時，請勿直接面對運轉中的工具。**

**\*\*使用前請務必確認旋轉方向。**

**\*\*當馬達停止時，請必需停止動作，避免損壞充電起子。**

## 維修與保養

### 1. 檢查各部安裝螺釘

請確認工具上螺釘等有無鬆動。鬆動時，請重新鎖緊。

### 2. 使用後之維護

請拭去油污等污垢，隨時保持在容易使用之狀態。請以乾布或沾有肥皂水之布料擦拭主體。

使用汽油、稀釋液、石油類清潔會損傷主體。此外，嚴禁用水清洗。

### 3. 作業後之保管

請存放於乾燥、濕度低、避免太陽直曬、兒童伸手可及容易落下之場所。

### 4. 修理

本機在嚴格品質下製造，若無法正常運轉，請與購買之經銷商連繫。

## 處置和回收利用

外包裝是防止其在運輸途中受損。這種包裝原料，可以被重複利用。各類材料，如金屬和塑膠，配件也可回收再利用。電池及電路板的部件必須作為特殊廢物處置，處置方式請詢問您的經銷商或當地政府。

## PT-1362U 锂电池充电起子组操作手册

### 重要安全须知



**警告！为降低伤害风险，用户必须阅读使用手册。**

在正确而安全的状态下使用，之后请妥善保管本使用说明书。

### 工作环境

1. 请保持工作环境整洁，脏乱或黑暗的工作环境会导致工作时危险。
2. 请勿在容易起火、爆炸的场所附近使用；例如，易燃的液体、气体或粉末。充电起子恐会产生火花而造成易燃物的燃烧。
3. 当使用充电起子时，请远离孩童或旁观者，以避免使用时不注意、疲劳时而导致的危险。

### 电的安全

1. 充电起子的插头需符合插座。请勿自行修改插头！自行修改的插头恐会造成危险或短路而起火。
2. 避免身体与有接地线或接地线表面物品接触；例如，输送管，散热器，炉灶和冰箱，以避免触电，而导致危险。
3. 请勿在雨中、湿漉地、潮湿场所使用工具，水会进入充电起子而导致短路、冒烟或燃烧。
4. 请勿拿着电线搬运充电器或以拉扯电线方式从插座拔下插头。请勿在火源、油、尖锐物品或会移动的对象附近使用，以免触电、冒烟或燃烧。

### 个人使用

1. 使用充电起子时，请保持警觉并注意，请勿在精神不济、疲劳时、服用药物后或喝酒后使用，以避免造成个人或它人的危险或受伤。
2. 请使用个人防护设备（例如，口罩、安全鞋、安全帽、或防火衣物..等）并配戴安全眼镜，以避免工作时造成个人受伤之疑虑。
3. 使用前，请务必注意开关是否已在关闭状态，以避免在拿取时触碰开关，造成工具运转。
4. 使用前，请确认金属物品已离开工具，避免充电起子转动时造成工具的损坏或个人受伤。

### 工具使用及注意

1. 请勿直接面对运转中的充电起子，并慎选正确的工具作业。正确的使用工具，可帮助安全的作业及迅速的完成。
2. 请勿自行拆解充电起子，以避免造成损坏。不正确的组装会造成充电起子的损坏。若有任何问题，请联络所购买之店家。
3. **注意：**当充电起子电力耗尽时（无法再锁入或松脱螺丝），请勿继续按压开关，以免造成电池的老化。
4. 本充电起子并无离合器功能，当充电起子无法再锁入或松脱螺丝时（扭力不足），

务必停止使用，以避免造成工具内齿轮的崩坏或毁损。

5. 当开关无法使用（开或关）时，务必不要使用充电起子，以避免充电起子突然的运转而导致受伤。
6. 在更换配件或维修时，请务必将开关关闭，以避免误触开关而导致受伤。
7. 存放充电起子时，请务必存放于婴、幼儿无法拿取之地方，以避免婴、幼儿误触而受伤。
8. 在维修充电起子时，请务必将可能误触充电起子开关或运转的物品移除，以避免再维修时突然的运转而导致受伤。
9. 请依照使用说明书确实安装，以免脱落导致受伤。请以柔软布料擦拭，请勿使用湿布、稀释液或溶剂等挥发性物品。
10. 在安装配件时，请务必详读说明书的操作方式，以避免不正确的安装而导致充电起子的损坏及使用者受伤。
11. 使用时请勿过度晃动机子，以免造成充电起子的不良。
12. 孩童不可使用或玩此工具。
13. 充电起子若长时间未使用时，务必请每三个月定期做充电一次，以避免造成电池钝化，而无法使用。

## 充电器安全须知

1. 充电前，请详读安全须知。
2. **注意：**充电务必使用合格的充电器和充电线。请勿使用不适合或不同规格的充电器，以避免电池的短路或起火。
3. **注意：**不可于充电中同时使用工具，以免造成电池的快速老化。
4. **注意：**充电时间不可超过**四**小时，以免造成电池的老化。
5. 请勿使用非原厂生产的整组配件的产品或充电器，以避免起火、触电或对人造成危险及受伤。
6. 请勿将液体倒入或接触充电器，以避免造成充电器短路、起火或损坏。
7. 请勿在充电器上方放置物品，恐会造成充电器温度过高且远离发热物品或火源。
8. 拔除充电器插头时，请手持插头拔除，请勿拉扯电线，以避免电线断裂。
9. 请慎选电线不会被践踏、拉扯等受损之充电场所，以免触电或短路导致起火。
10. 尽量避免使用延长线，若必需使用，请慎选并定期检查，损坏时须置换，以免因触电或短路而受伤。
11. 请勿使用已损坏、破裂或摔过的充电器，以避免短路而受伤。请将有问题之充电器由所购买之经销商检查或维修。
12. 当充电电线有损坏时，请将有问题之产品，由所购买之经销商检查或维修。
13. 请依说明书上标示之电源。请勿使用直流电源或引擎发电机，以免因异常发热而导致火灾。
14. 请勿自行拆解充电器，以避免造成损坏。不正确的组装会造成充电器的短路或起火。若有任何问题，请联络所购买之经销商。
15. 请在 0°C~+35°C (32°F~95°F) 范围内充电，工作温度 0°C~+35°C (32°F~95°F)，储存温度 0°C ~35°C (32°F~95°F)。



16. 当电池处于高温状态，电解液会产生气体，电极片中树脂粘接剂会发生质变，而使电池逐渐老化与衰退，甚至短期失效。
17. 当电池处于低温状态，电解液会凝固，内阻会无穷大，电池将无法使用，且无法充电。
18. 当电池处于高温状态，电解液会产生气体，电极片中树脂粘接剂会发生质变而使电池逐渐老化与衰退，甚至短期失效。

## 使用说明

### 产品规格：

型号. PT-1366U	
电压	3.6V
扭矩调节	7+1 档
最大扭矩（硬/软扭矩）	5.5 / 3.5N.m
最小扭矩	0.2 N.m
转速（无负载）	320 转/分钟
批头座规格	1/4" (6.35mm)
电池	Li-ion 3.6V 2000 mAh
充电接口	USB Type-C
充电时间	3~5h
空载转动时间	~65min
特殊功能	LED 辅助照明
	电池电量指示
产品尺寸	Φ38x195mm
配件	25mm 螺丝起子头 24pcs:  PH1x2,PH2x2,PH3x2;  3.0,4.0,5.0;

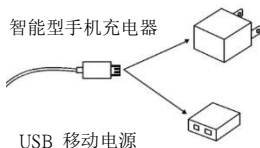
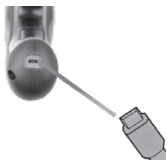


	 PZ1,PZ2 T10x1,T15x2,T20x2; 3.0x2,4.0x2, 5.0x1 S0,S1,S2
	50mm 螺丝起子头 4pcs:  3.0,4.0 PH1, PH2
	转接头 (50mm)
	USB Type-C 充电线
工作环境	0~35℃ (32~95°F) ; less than 80% RH
储存环境	0~35℃ (32~95°F) ; less than 80% RH

## 充电插入说明

为保证您的工作顺利，新产品使用前或长时间不用，再次使用前必须充满电后才可使用。

充电：将USB Type-C插头插入产品Type-C充电插座，另一端连接充电器USB接口，充电器插入电源插座，充电时，LED指示灯闪烁，充电完成后，三个LED同时点亮。



### 注意：

\*充电器必须使用输出DC 5V 1~3A电源充电器，如智能型手机充电器或行动电源。

\* iPhone/iPad/iPod (苹果) 使用者，请使用市面上标准或随货附上的 USB 传输线充电。

\*不可长时间为本产品充电，充电时间不可超过4小时。否则，可能引起产品电池漏液或爆炸等危险！

**注意：请勿使用桌上型或笔记本电脑充电，以免造成计算机的损坏。**

## 产品外观



1. Type-C 充电插座 2. 充电/电量指示 LED 3. 开关 4. 逆时针旋转按键  
5. 顺时针旋转按键 6. 扭矩调节杯 7. 辅助照明 LED 8. 快脱式批头座

## 产品使用指南

### 1. 起子头配件的安装与取下

**安装：**将快脱式夹头卡环向下压，然后将螺丝起子头插入夹头座，松开卡环自动锁住批头；请检批头确实插入并锁紧。

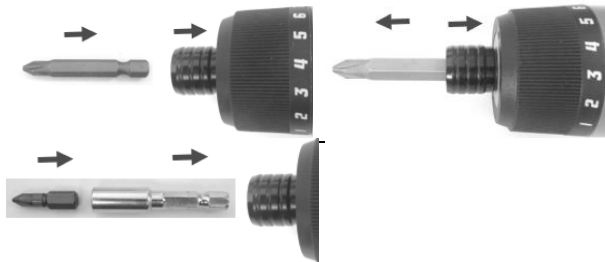
**取下：**将快脱式夹头卡环向下压，然后将螺丝起子头拉出。

**\*\*作业前，请确认起子头是否安装正确。**

**\*\*作业中请勿摇动起子，以免发生危险。**

**\*\*安装、取下起子头时，请勿压按开关，以免因突然运转而导致受伤。**

**\*\*请勿一面运转电动起子一面更换起子头/钻尾。**



### 2. 开关及正/反转的使用

**开关：**单击开关按键，电池指示灯亮，3 秒钟后熄灭；3 个指示灯亮，表示电量充足，2 个 LED 灯亮，表示电池电量不足，但可以使用；若只有一个指示灯亮，表示电池电量严重不足，需要充电。

**操作：**按开关键，然后按“◀”或“▶”键，电批顺时针或逆时针旋转；按键为触发式按键，按则开始转动，放则停止。

开机状态，1分钟内无操作，则电批自动关机，按开关键可重新启动工作。

\*\*压按开关时，请勿直接面对运转中的工具。

\*\*使用前请务必确认旋转方向。

\*\*当马达停止时，请必需停止动作，避免损坏充电起子。

## 维修与保养

### 1. **检查各部安装螺钉**

请确认工具上螺钉等有无松动。松动时，请重新锁紧。

### 2. **使用后之维护**

请拭去油污等污垢，随时保持在容易使用之状态。请以干布或沾有肥皂水之布料擦拭主体。

使用汽油、稀释液、石油类清洁会损伤主体。此外，严禁用水清洗。

### 3. **作业后之保管**

请存放于干燥、湿度低、避免太阳直晒、儿童伸手可及容易落下之场所。

### 4. **修理**

本机在严格质量下制造，若无法正常运转，请与购买之经销商联系。

## 处置和回收利用

外包装是防止其在运输途中受损。这种包装原料，可以被重复利用。各类材料，如金属和塑料，配件也可回收再利用。电池及电路板的部件必须作为特殊废物处置，处置方式请咨询您的经销商或当地政府。

# Pro'sKit® 中国地区产品保固卡

购买日期		店章
公司名称		
联络电话		
电子邮箱		
联络地址		
产品型号	□PT-1366U	

※ 在正常使用情况下，自原购买日起主机保修一年（不含配件、易耗品）。

※ 产品保固卡需盖上市章、日期章并填写产品序号，其保固效力始生效。

※ 本卡请妥善保存，如需维修服务时，请同时出示本保固卡，如无法出示，视为自动放弃。

※ 保固期满后，如需维修，则酌收检修工时费用。若零件需更换零件费另计。

※ 保修说明：

- 保固期限内，如发生下列情况，本公司需依据实际状况酌收材料成本或修理费（由本公司维修人员判定）：
  - 产品表面的损伤，包括外壳的破裂或刮痕
  - 因误用、疏忽、不当安装或测试，未经授权私自打开产品修理，修改产品或者任何其它超出预期使用范围的原因所造成的损害
  - 因意外因素或人为因素（包括搬运、碰撞、高温、输入不合适电压、进水、腐蚀等不可抗力因素）导致的故障或损坏。
  - 其它非正常使用导致的故障及损坏。
- 非服务保证内容
  - 本机主体外之配件：批头、充电线等配件。
  - 超过保固期限仍需检修，虽未更换零件，将依本公司保固条款酌收工时服务费。

制造商：宝工实业股份有限公司  
地址：台湾台北新北市新店区民权路130巷7号5楼  
电话：886-2-22183233  
E-mail: pk@mail.prokits.com.tw

销售/生产商：上海宝工工具有限公司  
地址：上海市浦东新区康桥东路1365弄25号  
电话：021-68183050  
原产地：中国 上海  
服务热线：400 1699 629

# ***Pro'sKit***<sup>®</sup>



宝工实业股份有限公司  
PROKIT' S INDUSTRIES CO., LTD

<http://www.prokits.com.tw>

Email: [pk@mail.prokits.com.tw](mailto:pk@mail.prokits.com.tw)

©2024 Prokit' s Industries Co., LTD. All rights reserved 2024001(a)