
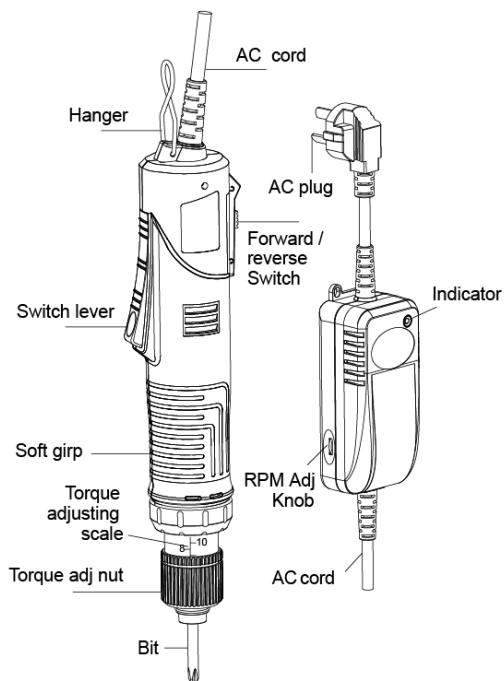


PT-320 Series Electric Screwdriver

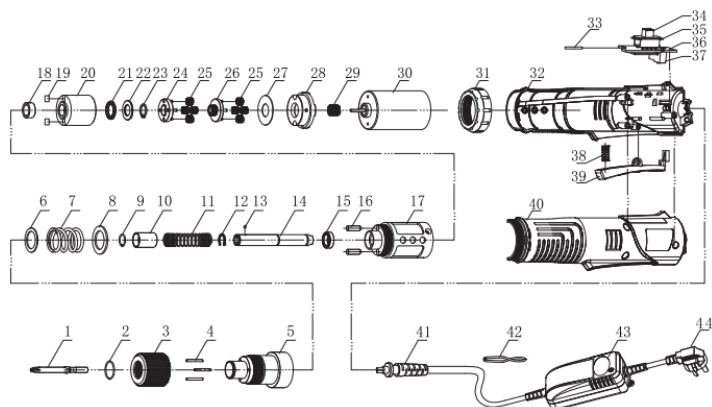
User Manual

Thank you for using the **Pro'sKit®** Electric Screwdriver, the product has a reasonable structure, excellent quality, easy operation, and convenient use. To maximize the effectiveness of this device, please read this user manual carefully before operation. And keep it safe for future reference.

 **Warning!** To reduce the risk of injury, users must read the user manual.



Diagram



PARTS LIST											
No.	Name	QTY	No.	Name	QTY	No.	Name	QTY	No.	Name	QTY
1	Bits	2	13	Steel ball	1	22	Shaft block	1	34	Reversible switch cap	1
2	Circlip	1		a.Anvil Ø 4.0mm	1	23	Circlip	1	35	Reversible switch	1
3	Torque adj nut	1	14	b.Anvil Ø 5.0mm	1	24	Planet carrier	1	36	Circuit board	1
4	Position pin	3		c.Anvil Ø 6.0mm	1	25	Planet gear	8	37	Trigger switch	1
5	Torque seat	1		d.Anvil Ø 6.35mm	1	26	Planet carrier	1	38	Press button spring	1
6	Gasket	1	15	Bearing	1	27	Planet gasket	1	39	Press button	1
7	Torque spring	1	16	Torsion plunger	2	28	Contact bar	1	40	Handle bar cap	1
8	Gasket	1	17	Cabinet	1	29	Motor gear	1	41	Power cord	1
9	Circlip	1	18	Shaft sleeve	1	30	Brushless motor	1	42	Hanging ring	1
10	Joint shaft collar	1	19	Rolling ball	2	31	Handle cap	1	43	Power adaptor	1
11	Lock sleeve spring	1	20	Inner gear sleeve	1	32	Handle botton	1	44	Power plug	1
12	Shaft jam	1	21	Flat bearing	1	33	Hall switch	1			

(To order spare parts, according to the above number)

Applications

This series of electric screwdrivers is suitable for various purposes, such as air conditioning, communication, instruments, power tools and other industries, as well as a specialized tool for quickly assembly and disassembly screws for small household appliances such as laptops, LCD displays, and mobile phones in the electronics industry.

Features

- *Power supply with stepless speed regulation, reliable and stable, energy-saving and environmentally friendly.
- *Ergonomic plastic handle design, comfortable and convenient to use.
- *Automatic shut off function when torque setting arrived, it can effectively protect screws and improve work efficiency.
- *High-quality motor and long-lasting switches, with low noise and long service life.

Specifications

Model	PT-32015D	PT-32007D	PT-32030D
	Semi auto shut off	Full auto shut off	Semi auto shut off
Input voltage	AC100~240V 50/60Hz		
Output voltage	DC 24-32V		DC 24-36V
Rated power	36W		80W
Torque	kgf.cm	2.0~15.0	1.0~7.0
	N.m	0.2~1.5	0.1~0.7
Accuracy	±5%		
Speed	900~1200(r/min)		700~1200(r/min)
Weight	Approx 490g		Approx 700g
Length	220mm /8.7 inch		250mm /10 inch
Grip diameter	37mm /1.46inch		42mm /1.7inch
Accessories bits	Φ5mm	Φ4mm	S 1/4
	PH1, PH2 (60mm)	PH0, PH2 (40mm)	PH1, PH2 (65mm)
Power adapter	5PT-32015D-AD		5PT-32030D-AD

Accessories:

- *1 user manual
- *2 bits
- *1 power adapter (including wires)

Usage procedure

1. Attach the bit to the driver.
2. Insert the power cord plug into the output socket of the matching power adapter.
3. Connect the plug of the power adapter to the power socket.
4. Adjust the Forward/reverse Switch, pushing upwards for reverse rotation and downwards for forward rotation (PT-32015D, PT-32030D have OFF in the middle).
5. The Torque adj nut can adjust the torque, increasing

clockwise torque and decreasing counterclockwise torque.

Refer to the Torque adjusting scale for setting.

6. The RPM Adj Knob of the power supply can be continuously adjusted of speed.

7. Press the Switch Lever to start working.

8. Hooks are used for balancing suspension.

Torque Adjustment procedure

1. If the screw fastening torque is already known, set the torque adjustment nut to the appropriate level
2. Operate the driver so that the screw is tightened, and check the tightness of the screw after the driver stops automatically
3. If the screw is too loose, slide the torque adjustment nut upwards to increase the fastening torque. Repeat this process to determine the appropriate tightness.



Notices

- *This electric screwdriver must be used in conjunction with attached power supply.
- *Please use qualified bits to avoid excessive jumping during operation.
- *Regularly check the power cord, if any damage exists, immediately stop using it.
- *Do not change the direction of rotation during operation, otherwise it will cause damage to the motor and components, affecting the service life.
- *Do not use this electric screwdriver in dusty or humid surrounding.
- *Please do not disassemble it and consult professional repair.
- *Do not use aerosol oil or similar lubricants on tools, otherwise it may cause product abnormalities.
- *Do not knock, drop or abuse the product, as it may cause cracks or damage.
- *Do not use chemical reagents to wipe the casing.
- *Use at the correct operating voltage (110-240V).
- *When unplugging the power cord from the power socket, do not pull the AC power cord, otherwise it may cause the power cord to break and cause a malfunction.
- *To avoid dragging wires onto the floor, please use a spring balancer to hang them.
- *For safe use, do not set a torque bigger than the "10" mark on the Torque adjusting scale. Please use an electric screwdriver with a 70% maximum torque to avoid the brake mechanism from accurately tripping out (the maximum torque limitation may vary depending on the hardness of the screwed object).

*Intermittent use of tools, such as 0.8sec ON/2.4sec OFF.

*Do not tighten more than 720 pcs automatic screws within an hour.

*This tool is not used to tighten wooden screws.

*If the product is not in use, please unplug the power plug and store it after powering off.

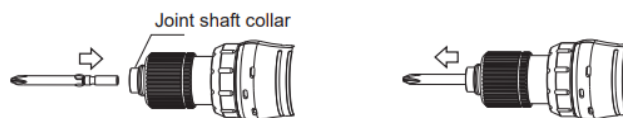
Operation precautions

*When starting the screwdriver, it is very dangerous to clamp or push the end of the drill bit with your fingers, and do not touch the rotating parts.

*Under clutch, the screw is tightened to the setting torque strength and then automatically stops.

*To loosen the tightened screw, pushing the switch upward for reverse rotation. If the screw is not loose, adjust the torque nut to increase the torque, and then try again.

*To install or replace the screwdriver bits, please push the joint shaft collar on the locking sleeve at the end of the screwdriver upwards and then insert or remove the screwdriver bit. After insertion, check if the screwdriver bit is loose and securely fastened.



⚠ Caution

When attaching the bit, always ensure that the driver FOR/OFF/REV switch is set to "OFF", or that the driver power plug has been removed from the AC power outlet.

Electric screwdriver power adapter operation manual

Features:

- *Input voltage: AC 100V-240V 50/60Hz
- *Stepless adjustment: Smoothly adjust the RPM Adj knob output different speeds to meet the operational needs of different applications. Whether the screws are longer or shorter, they can be effectively locked, while meeting the high-precision torque output requirements of the screwdriver.

Specifications

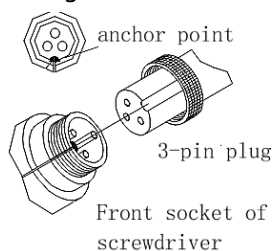
Model	5PT-32015D-AD	5PT-32030D-AD
Input voltage	AC 100V-240V 50/60Hz	
Output voltage	24 ~ 32V DC	DC 24-36V
Rate power	60W	160W
Output current	2.5A DC (Max)	4.5A (Max)
Function	Stepless adjustment	
Weight	approx. 170 g	
Size	142*54*37mm	
Applicable models	PT-32015D PT-32007D	PT-32030D

Notes for the use place:

- *Please plug it into the power line equipped with a leakage protector and overload circuit breaker for use.
- *Please use in a workplace with normal temperature, and away from humidity, dust, iron powder, and iron filings.
- *Please place it on a stable workbench to avoid the danger of vibration of falling down.
- *Please stay away from sources of high voltage and noise to avoid mutual interference.
- *Please do not place any items on this machine to ensure good heat dissipation.

Operating precautions:

- *Unless specified, please do not interact different loading with each other.
- *The power cord plug must be tightly inserted into the power socket when use.
- *When unplugging or connecting the power cord or the power supply to the screwdriver, it is necessary to grasp the plug part and not pull the wire itself to prevent internal wire breakage.
- *When inserting the power cord into an electric screwdriver or power supply socket, the inserting direction must be correct and must be aligned with the guide point inside the socket to avoid the pin from breaking. Then, fix it onto the machine with a nut. As shown in the figure:



- *The internal connection wire of the output plug of this machine is dedicated to electric screwdrivers and cannot be used for other purposes
- *When not in use for a long time, the plug must be unplugged from the power socket and properly cleaned and stored

Troubleshooting

When the screwdriver cannot operate normally, please check the following contents. If the issue can't be solved, do not disassemble it by yourself. Contact your local agent immediately

Screwdriver not running:

1. Check if the power cord plug is correctly and tightly insert into the specified power source
2. Check if there is 24-32(36) VDC between pin No.1 and No.3 of the output terminal. If there is no output or abnormality exists, replace it with a new one.

Warranty

After confirming the sales date with the dealer's seal, this equipment will be provided with a free repair service for twelve months.

Only in the case of following situations, our company may charge material and production costs accordingly

- Natural abrasion in components
- Improper operation causing short circuit
- Improper use or disassembly of self-repair
- Those who exceed the warranty period or fail to present the warranty card

General safety warning for electric tools

⚠ Warning! Read all warnings and instructions. Failure to follow the following warnings and instructions may result in electric shock, fire, and/or serious injury.

Save all warnings and instructions for future reference.

In all of the following warnings, the term "electric tool" refers to a main powered (wired) electric tool or a battery powered (wireless) electric tool.

A) Workplace safety

1. Keep the workplace clean and bright. Chaotic and dark place can cause accidents.
2. Do not operate electric tools in explosive environments, such as environments with flammable liquids, gases, or dust. Sparks generated by electric tools can ignite dust or gas.
3. Do not allow children and bystanders getting close when under use. Lacking concentration may cause injury during use.

B) Electrical safety

- 1) The electric tool plug must match the socket. Never modify the plug in any way. Electric tools that require grounding cannot use any conversion plugs. Unmodified plugs and matching sockets will reduce the risk of electric shock.
 - 2) Avoid human contact with grounded surfaces, such as pipes, heat sinks, and refrigerators. If your body is grounded, it will increase the risk of electric shock.
 - 3) Do not expose electric tools to rain or humid environments. Water entering electric tools will increase the risk of electric shock.
 - 4) Do not abuse wires. Never use wires to transport, pull or unplug electric tools. Keep wires away from heat sources, oil, sharp edges, or moving parts. Damaged or tangled flexible cords can increase the risk of electric shock.
 - 5) When using electric tools outdoors, use external flexible cables suitable for outdoor use. Flexible cords suitable for outdoor use will reduce the risk of electric shock.
 - 6) If operating electric tools in humid environments is inevitable, residual current operated protectors (RCDs) should

be used. The use of RCD can reduce the risk of electric shock.

Note: The terms "residual current operated circuit breaker (RCD)" can be replaced by the terms "ground fault circuit breaker (GFCI)" and "ground leakage circuit breaker (ELCB)".

C) Personal safety

1) Stay alert and pay attention to the operation of electric tools while maintaining clarity. Do not operate electric tools when you feel tired or have reactions to medication, alcohol, or treatment. Instant negligence during the operation of electric tools can lead to serious personal injury.

2) Use personal protective equipment. Always wear protective goggles. Safety devices, such as using dust masks, anti-slip safety shoes, safety helmets, hearing protection, etc. under appropriate conditions, can reduce personal injury.

3) Prevent accidental starting. Ensure that the switch is in the off position when connecting the power supply and/or battery box, picking up or moving tools. Placing your finger on a switch that is already powered on or inserting a plug when the switch is turned on may cause danger.

4) Before turning on the power tool, remove all adjustment keys or wrenches. Wrenches or keys left on rotating parts of electric tools can cause personal injury.

5) Don't stretch your hands too long. Always pay attention to the foothold and body balance. This way, electric tools can be well controlled in unexpected situations.

6) Dress appropriately. Do not wear loose clothing or accessories. Keep clothes, gloves, and hair away from moving parts. Loose fitting clothing, accessories, or long hair may get caught in moving parts.

7) If devices are provided for connecting with debris removal and dust collection equipment, ensure that they are properly connected and used properly. Using these devices can reduce the danger caused by dust particles

D) Usage and precautions for electric tools

1) Do not abuse electric tools and use appropriate ones according to their intended use. Choosing appropriately designed electric tools will make your work more efficient and safer.

2) If the switch cannot turn on or off the power supply of the tool, the electric tool cannot be used. Electric tools that cannot be controlled by switches are dangerous and must be repaired.

3) Before making any adjustments, replacing accessories, or storing electric tools, the plug must be unplugged from the power source and/or the battery box must be disconnected from the tool. This protective measure will reduce the risk of accidental tool start-up.

4) Store unused electric tools outside the reach of children

and do not let anyone unfamiliar with electric tools or unfamiliar with these instructions operate them. Electric tools are dangerous in the hands of untrained users.

5) Maintain electric tools. Check if the moving parts are properly adjusted or stuck, check for damage to the parts and other conditions that affect the operation of the power tools. If there is any damage, the electric tool should be repaired before use. Many accidents are caused by poorly maintained electric tools.

6) Keep cutting tools sharp and clean. Tools with sharp cutting edges that are well maintained are not easily stuck and easy to control.

7) According to the user manual, consider the operating conditions and the tasks performed to use electric tools, accessories, and tool heads. Using electric tools for operations that do not match their intended purpose may lead to danger.

E) Repair

Send your electric tool to a professional repairman and use the same spare parts for repair. This will ensure the safety of the electric tools being repaired.



Additional safety warning for electric tools

Warning!

When operating fasteners that may come into contact with hidden wires or their own soft wires, the tool should be held using an insulated grip surface. Fasteners touching live wires can cause the exposed metal parts of the tool to become electrified, resulting in electric shock to the operator.

※ Please use fixtures or other feasible methods to securely fix the workpiece on a stable platform. Holding or using the body to hold the workpiece is unstable and can lead to uncontrolled operation.

※ Residual risk

When using the equipment, there may be other residual risks beyond this safety warning. These risks may come from improper use, prolonged use, etc. Despite complying with relevant safety regulations and using safety equipment, certain risks are still unavoidable. These risks include:

- Risk of injury caused by contact with rotating/moving parts.
- Risk of injury caused by replacing components or accessories.
- Risk of injury caused by long-term use of tools. When using any tool for a long time, regular rest should be taken.
- Hearing loss.
- Health hazards caused by inhalation of dust generated by operating equipment.

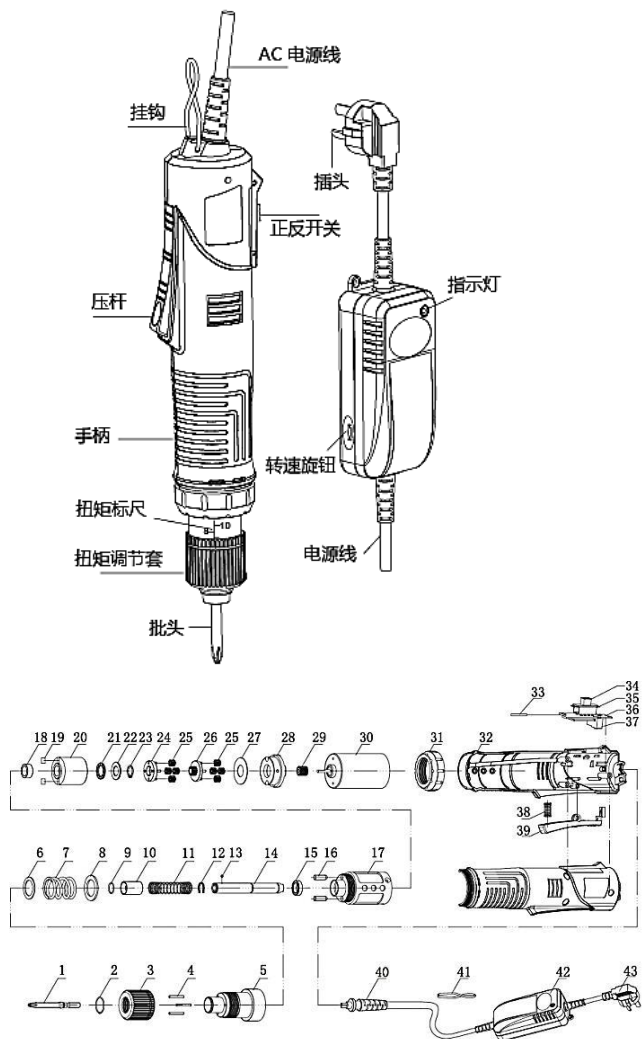
PT-320 系列电动螺丝刀使用说明书

感谢你使用 Pro'sKit® 电动螺丝刀。本系列产品结构合理，质量精良，运转精准，使用方便。为了能使本机发挥最大的使用效能，操作前，请仔细阅读本使用说明书，阅读后请妥为保管收存，以备日后查阅。



警告！为降低伤害风险，用户必须阅读 使用手册。

外型图



零件表格

No.	Name	QTY	No.	Name	QTY	No.	Name	QTY	No.	Name	QTY
1	批头	2	13	明珠	1	22	垫片	1	34	正反开关档	1
2	卡簧	1	14	a. 主轴 Ø4.0mm	1	23	卡簧	1	35	正反开关	1
3	扭力帽	1	15	b. 主轴 Ø5.0mm	1	24	行星齿轮架	1	36	线路板	1
4	顶针	3	16	c. 主轴 Ø6.0mm	1	25	行星齿轮	8	37	启动开关	1
5	扭力座	1	17	d. 主轴 Ø6.35mm	1	26	行星齿轮架	1	38	压杆弹簧	1
6	垫片	1	18	轴承	1	27	垫片	1	39	压杆	1
7	扭力弹簧	1	19	滚珠	2	28	链接块	1	40	电线	1
8	垫片	1	20	顶针	2	29	马达齿轮	1	41	挂钩	1
9	卡簧	1	21	箱体	1	30	马达	1	42	电摩控制器	1
10	铁套筒	1	22	轴承	1	31	手柄帽	1	43	插头	1
11	铁套筒弹簧	1	23	滚珠	2	32	外壳	1			
12	卡簧	1	24	内齿圈	1	33	霍尔开关	1			
			25	平面轴承	1						

(产品示意图，以实际为准，本公司持变更的权利)

用途

本系列电动螺丝刀是适合空调、办公通讯、仪器仪表、电动工具等各类行业，以及电子行业为笔记本电脑、液晶显示器、手机等小家电行业快速装卸螺丝的专用工具。

特点

- * 采用无极调速电源供电，工作可靠稳定，节能环保。
- * 全塑手柄，符合人体工学设计，使用便利。
- * 具备扭力设定抵达自动停机功能，能有效保护螺丝及提高作业效率。确保工件无损伤，外观完整。
- * 内部采用优质电机、长寿开关，噪音低，使用寿命长。

使用方法

- * 将电源线插头插入配套电源适配器的输出插孔内。
- * 推压接头轴环，可装卸批头。
- * 将电源适配器的插头接通电源插座。
- * 调整拨动正反开关，向上推为反转，向下推为正转(PT-32015D, PT-32030D 中间为关断)。
- * 扭力调节套可调节扭力大小，顺时针扭力加大，逆时针扭力减小，参考扭矩标尺进行设定。
- * 电源器的转速开关可进行无级调整速度。
- * 按下压杆即可工作。
- * 挂钩用于平衡器悬挂。

特性

型号	PT-32015D 半自动式	PT-32007D 全自动式	PT-32030D 半自动式
工作电压	AC100~240V 50/60Hz		
输出电压	DC 24-32V		DC 24-36V
额定功率	36W		80W
扭力	kgf.cm	2.0~15.0	1.0~7.0
	N.m	0.2~1.5	0.1~0.7
扭力精度	±5%		
启动方式	压杆式		
转速	900~1200(r/min)		700~1200(r/min)
产品重量	约 490g		约 700g
长度	220mm /8.7 in		250mm /10 in
握持直径	37mm /1.46in		42mm /1.7in
批头规格	Φ5mm	Φ4mm	S 1/4
批头配件	PH1 PH2 (60mm)	PH0 PH2 (40mm)	PH1 PH2 (65mm)
电源型号	5PT-32015D-AD		5PT-32030D-AD

附属品

- * 说明书 1 份
- * 批头 2 只
- * 电源适配器(含电线) 1 个

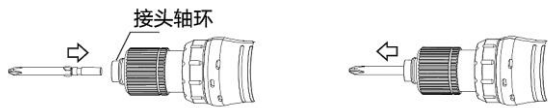
注意事项

- * 本电动螺丝刀必须与随机的专用电源器配套使用。
- * 请选用合格批头，以免作业时跳动过大。
- * 经常检查电源线，发现破损，即刻停用。
- * 运行中不得变换旋转方向，否则会造成电机及器件损坏，影响使用寿命。

- * 本电动螺丝刀禁止在粉尘或潮湿环境中使用。
- * 当产品出现故障时，请勿拆卸，请专业人员维修。
- * 不要用气溶胶油或类似对的润滑剂来润滑工具，否则会导致产品异常。
- * 不要敲击，跌落或滥用产品，否则可能导致裂纹或破损等问题。
- * 不要使用化学试剂擦拭机壳。
- * 在正确的工作电压（110-240V）下使用。
- * 从电源插座上拔下电源线时，请勿拉扯交流电源线，否则可能导致电源线断线，引起故障。
- * 为避免交流电线拖到地板上，请使用弹簧平衡器挂起。
- * 为了安全使用，不要将调节扭矩杯上设置大于“10”标识的扭矩。请使用电动螺丝刀额定最大扭矩的70%以下操作以避免刹车机构无法准确跳脱(设限最大扭矩会因被锁物之软硬程度不同而异)。
- * 间歇使用工具，例如：0.8sec ON/2.4sec.OFF。
- * 在一个小时内不要拧紧超过720个自动螺丝。
- * 该工具不用于拧紧木头螺丝。
- * 如果没有使用产品，请拔下电源插头，断电后收存。

操作注意事项

- * 启动螺丝刀时，用手指夹住钻头末端或推动推动钻头末端都是非常危险的，切勿接触旋转部位。
- * 离合器作用下螺丝拧紧到设定的扭矩值，然后自动停止。
- * 松开拧紧的螺丝是，切换正反开关到反向旋转，如果螺丝不松动，调整扭力调节螺母增加扭力，然后重新尝试。
- * 安装或更换批头，请向上推动螺丝刀末端锁紧套上的接头轴环，并插入批头或是拔出批头,插入后需检查批头是否松动，有效紧固。



- * 安装或更换批头时，确保转动开关至于关闭位置，或将电源拔除。

电动螺丝刀电源适配器操作说明书

特点

- * 额定电压范围: AC 100V-240V 50/60Hz 通用电源。
- * 无级调速控制: 平滑调整转速，满足不同行业作业需求，无论较长或较短螺丝均能有效锁付，同时满足螺丝批输出高精度扭力的要求。

规格

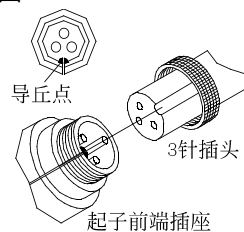
型号	5PT-32015D-AD	5PT-32030D-AD
适用电压	AC 100V-240V 50/60Hz	
输出电压	24 ~ 32V DC	DC 24-36V
额定功率	60W	160W
输出电流	2.5A DC (最大)	4.5A (最大)
输出调整	无级调速	
重量	170 g	
外观尺寸	142*54*37mm	
适用机种	PT-32015D, PT-32007D	PT-32030D

使用场所注意事项:

- * 请插在装有漏电保护器及超载断路器之电源线路路上使用;
- * 请放置在常温常湿及远离灰尘及铁粉铁屑的工作场所使用;
- * 请放置在安定的工作台上使用以避免振动落下的危险;
- * 请远离高压及噪声发生源,以避免相互干扰;
- * 请不要在本机上面放置任何物品,保证良好的散热;

操作注意事项:

- * 除非指定，不同负载，请不要相互配对;
- * 电源线插头必须紧密地插在电源插座上使用;
- * 拔插电源线或电源供应器与螺丝批之连接线,必须抓住插头部分,不可拉扯电线本身以防止内部电线断路;
- * 电源线插入电动螺丝批或电源供应器插座时,它有方向性,必须对准插座内之导丘点后方可用力推入，以避免插针折断.然后再用螺帽固定在本机上.如图:



- * 本机输出端插头之内部连接线属电动螺丝批专用,不可移作他用.
- * 长时间不使用时,必须将插头拔离电源插座,并妥善清洁保存

简易故障排除

当螺丝刀不能正常运转时,请按以下内容检查,若均属正常不能解决问题,请勿任意分解拆卸,速与当地代理商联系.

螺丝批不运转:

- * 检查电源线插头是否正确，紧密地插入指定的电源
- * 检查输出端子针号 No:1, No:3 间有无 24~32(36)VDC,若无输出或异常则需更换新品.

保证

本部件经经销商盖章确认销售日期后提供十二个月之免费维修服务,唯有下属情形者,本公司得酌收材料工本费

- 自然磨损之零件
- 操作不当造成连接线断路
- 使用不当或自行拆修者
- 超过保证时间或未出示保修卡者

电动工具通用安全警告

警告! 阅读所有警告和所有说明。不遵照以下警告和说明会导致电击、着火和/或严重伤害。

保存所有警告和说明书以备查阅。

在所有下列的警告中术语“电动工具”指市电驱动(有线)电动工具或电池驱动(无线)电动工具。

A) 工作场地的安全

- 1) 保持工作场地清洁和明亮。混乱和黑暗的场地会引发事故。

- 2) 不要在易爆环境，如有易燃液体、气体或粉尘的环境下操作电动工具。电动工具产生的火花会点燃粉尘或气体。
- 3) 让儿童和旁观者离开后操作电动工具。注意力不集中会使操作者失去对工具的控制。

B) 电气安全

- 1) 电动工具插头必须与插座相配。绝不能以任何方式改装插头。需接地的电动工具不能使用任何转换插头。未经改装的插头和相配的插座将减少电击危险。
- 2) 避免人体接触接地表面，如管道、散热片和冰箱。如果你的身体接地会增加电击危险。
- 3) 不得将电动工具暴露在雨中或潮湿环境中。水进入电动工具将增加电击危险。
- 4) 不得滥用电线。绝不能用电线搬运、拉动电动工具或拔出其插头。使电线远离热源、油、锐边或运动部件。受损或缠绕的软线会增加电击危险。
- 5) 当在户外使用电动工具时，使用适合户外使用的外接软线。适合户外使用的软线将减少电击的危险。
- 6) 如果在潮湿环境下操作电动工具是不可避免的，应使用剩余电流动作保护器（RCD）。使用RCD可减小电击危险。

注：术语“剩余电流动作保护器（RCD）”可以用“接地故障电路断路器（GFCI）”和“接地泄漏电路断路器（ELCB）”术语代替。

C) 人身安全

- 1) 保持警觉，当操作电动工具时关注所从事的操作并保持清醒。当你感到疲倦，或在有药物、酒精或治疗反应时，不要操作电动工具。在操作电动工具时瞬间的疏忽会导致严重人身伤害。
- 2) 使用个人防护装置。始终佩戴护目镜。安全装置，诸如适当条件下使用防尘面具、防滑安全鞋、安全帽、听力保护等装置能减少人身伤害。
- 3) 防止意外启动。确保开关在连接电源和/或电池盒、拿起或搬动工具时处于关断位置。手指放在已接通电源的开关上或开关处于接通时插入插头可能会导致危险。
- 4) 在电动工具接通之前，拿掉所有调节钥匙或扳手。遗留在电动工具旋转零件上的扳手或钥匙会导致人身伤害。
- 5) 手不要伸展得太长。时刻注意立足点和身体平衡。这样在意外情况下能很好地控制电动工具。
- 6) 着装适当。不要穿宽松衣服或佩戴饰品。让衣服、手套和头发远离运动部件。宽松衣服、配饰或长发可能会卷入运动部件中。
- 7) 如果提供了与排屑、集尘设备连接用的装置，要确保它们连接完好且使用得当。使用这些装置可减少尘屑引起的危险。

D) 电动工具使用和注意事项

- 1) 不要滥用电动工具，根据用途使用适当的电动工具。选用适当设计的电动工具会使你工作更有效、更安全。

- 2) 如果开关不能接通或关断工具电源，则不能使用该电动工具。不能用开关来控制的电动工具是危险的且必须进行修理。
- 3) 在进行任何调节、更换附件或贮存电动工具之前，必须从电源上拔掉插头和/或使电池盒与工具脱开。这种防护性措施将减少工具意外起动的危险。
- 4) 将闲置不用的电动工具贮存在儿童所及范围之外，并且不要让不熟悉电动工具或对这些说明不了解的人操作电动工具。电动工具在未经培训的用户手中是危险的。
- 5) 保养电动工具。检查运动件是否调整到位或卡住，检查零件破损情况和影响电动工具运行的其他状况。如有损坏，电动工具应在使用前修理好。许多事故由维护不良的电动工具引发。
- 6) 保持切削刀具锋利和清洁。保养良好的有锋利切削刃的刀具不易卡住而且容易控制。
- 7) 按照使用说明书，考虑作业条件和进行的作业来使用电动工具、附件和工具的刀头等。将电动工具用于那些与其用途不符的操作可能会导致危险。

E) 维修

将你的电动工具送交专业维修人员，使用同样的备件进行修理。这样将确保所维修的电动工具的安全性。

电动工具附加安全警告

警告！

- ※ 在紧固件可能触及暗线或自身软线之处进行操作时，要通过绝缘握持面来握持工具。紧固件碰到带电导线会使工具外露的金属零件带电从而使操作者受到电击。
- ※ 请使用夹具或采取其它可行的方法，把工件可靠地固定在稳定的平台上。手持或用身体顶住工件都是不稳定的，会导致操作失控。
- ※ 剩余风险
使用设备时，可能出现本安全警示之外的其他剩余风险。这些风险可能来自使用不当，使用时间过长等。尽管遵守了相关的安全法规并采用了安全装备，某些风险仍然是无法避免的。这些风险包括：
 - 接触旋转/运动部件时所导致的伤害风险。
 - 更换部件或配件时所导致的伤害风险。
 - 长期使用工具所导致的伤害风险。长期使用任何工具时，均应定期休息。
 - 听力损伤。
 - 因吸入操作设备所产生的粉尘而导致的健康危害。

购买日期		店章
公司名称		
联络电话		
电子邮箱		
联络地址		
产品型号	<input type="checkbox"/> PT-32015D <input type="checkbox"/> PT-32007D <input type="checkbox"/> PT-32030D	

- ※ 在正常使用情况下，自原购买日起 12 个月免费维修保证（不含耗材、消耗品，电机保用 3 个月）。
- ※ 产品保固卡需盖上店章、日期章，其保固效力始生效。
- ※ 本卡请妥善保存，如需维修服务时，请出示本卡以为证明。
- ※ 保固期满后，属调整、保养或是维修性质之服务，则酌收检修工时费用。若有零件需更换，则零件费另计。

产品保固说明

保固期限内，如有下列情况者，维修中心则得酌收材料成本或修理费(由本公司维修人员判定)：

- 对产品表面的损伤，包括外壳裂缝或刮痕
- 因误用、疏忽、不当安装或测试，未经授权打开产品修理，修改产品或者任何其它超出预期使用范围的原因所造成的损害
- 因事故、火灾、电力变化、其它危害，或自然灾害所造成的损害。
- 非服务保证内容：
 - 机件本体之外之零配件：如批头等零配件。
 - 超过保证期限之检修或服务,虽未更换零件，将依公司保固维修政策酌收服务费。

制造商：

宝工实业股份有限公司

台湾台北新北市新店区民权路130巷7号5楼

电话：886-2-22183233

E-mail: pk@mail.prokits.com.tw

销售/生产商：

上海宝工工具有限公司

上海市浦东新区康桥东路1365弄25号

电话：021-68183050

服务热线：400 1699 629

网址: www.prokits.com.tw

Pro'sKit®

宝工实业股份有限公司

PROKIT' S INDUSTRIES CO., LTD

<http://www.prokits.com.tw>

Email: pk@mail.prokits.com.tw

©2024 Prokit' s Industries Co., LTD. All rights reserved 2024001(C)

