

## Quality Guarantee & Warranty

### Quality Guarantee

Oxford Precision products carry a one year manufacturers warranty.

Oxford Precision products are designed and manufactured to the highest standards and specifications.

Assuring the quality and performance required by all sectors of industry.

Oxford Precision products are fully guaranteed against faulty materials and workmanship.

Should they be found to be defective, they will either be repaired or replaced free of charge (fair wear and tear and/or misuse excepted).

Unauthorised opening of the magnifier forfeits the warranty.

Please retain supplier invoice as proof of purchase.

## PRECISION

### DECLARATION OF CONFORMITY

We hereby certify that the Rockwell Hardness Tester - Model HR-150A complies with all the relevant provisions of the standards of ISO 6508-2 and ASTM E18

# OXFORD PRECISION

Leicester, England.

A Division of The Kennedy Group Ltd

Signed:



Date: 3rd March 2012

Name: Martin Cooke

Position: Director, The Kennedy Group Ltd.

AVAILABLE FROM YOUR DISTRIBUTOR

# OXFORD PRECISION



Leicester, England

Oxford is a registered trade mark of The Kennedy Group Ltd.

# OXFORD PRECISION



## Rockwell Hardness Tester

### MODEL HR-150A

- For testing the hardness of alloys quenched and unquenched steels
- Uses steel balls and diamond penetrators to measure Rockwell A, B and C units of measurement
- Large capacity to accommodate large test specimens
- Rugged construction will withstand toughest environments
- Precision conforms to the standards of ISO 6508-2 and ASTM E18



## OXD-303-1000K

# OPERATOR'S MANUAL

## Introduction

### General Information

Hardness is an important parameter for mechanical performances of metallic and alloy materials. Generally, it refers to the capacity of a kind of material whose surface is penetrated by the other kind of harder material which has certain form and dimensions, and doesn't produce residual deformation by itself. Rockwell hardness test is the rapidest, easiest and most economic testing method in mechanical performance tests. Featuring high efficiency and easy-to-operate, the hardness values can be obtained directly. In most cases, it can fulfil the work that other mechanical performance test fails. Rockwell hardness tester Model HR-150A won the silver medal of the State Superior Product for three consecutive sessions. It is widely used to

measure the Rockwell hardness of hard alloy, quenched and unquenched steels in the labs of research institutions, colleges, factories and mines.

### Principle of Test

Rockwell hardness test is to apply diamond cone indenter (see Fig.2) or steel ball indenter (see Fig.3) to the specimen surface in two steps as shown in Fig.1, which shall be retained for a certain period of time, and measure the residual indentation depth under preliminary test force after the main test force is removed. The Rockwell hardness is calculated by formula (1) as per the h value, the constant N and S (see Table 1).  
 Rockwell hardness value =  $N - h/S$  ..... (1)

**Table 1: Symbols and descriptions**

Symbols	Descriptions	Units
F0	Preliminary test force	N
F1	Main test force	N
F	Total test force	N
S	Unit of given scale	mm
N	Hardness value of given scale	
h	Residual indentation depth under preliminary test force after main test force is removed	mm
HRA	Rockwell hardness = $100 h/0.002$	
HRC		
HRB	Rockwell hardness = $130 h/0.002$	

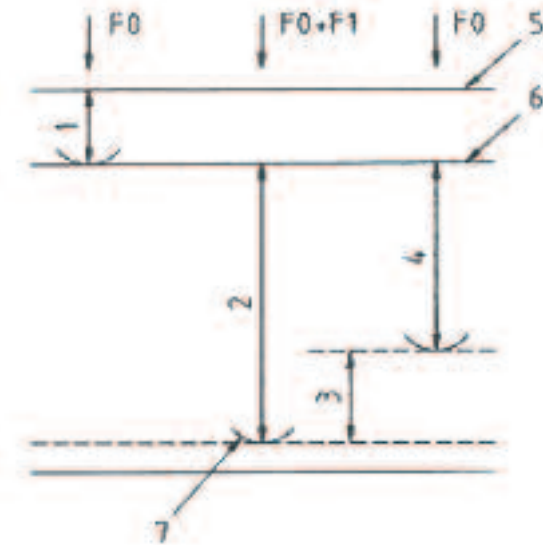
Worktable	Check whether there are impurities between worktable and elevating screw
	Check whether selected worktable is suitable for this specimen
	Check whether protective sleeve props up worktable
Specimen	Check whether the surface tested is perpendicular to the direction of test force
	Check whether the rear surface is burry
	Check whether the specimen is too thin
Environment	Check whether there is mechanical vibration resources around
	Check whether the temperature is kept at 10°C to 30°C
Others	Calibrate the hardness tester by standard block supplied

## Troubleshooting

When the tester breaks down, the following contents can help you predict the troubles and recommend the trouble shooting methods. If the problems remain unsolved, please contact with our after-sale service department rather than dismantle the tester by yourself.

Phenomena	Reasons	Remedies
Elevating screw rod is held back	Rusted or Chips	Get rid of the chips on elevating screw rod and hand wheel, fill with lubricants
Main test force can not be applied	Oil needle of buffer locked	Adjust oil needle to eliminate locking (refer to p.15)
	Weights not hanged properly	Adjust the position of weights as per operation manual (refer to P.9-10)
Larger pointer trembles when applying main load	The levelness of worktable not right	Adjust the levelness (refer to P.12)
Hardness value Precise	Test force	Check whether selected test force conforms to requirements of the scale
	Distance of indentation	Check whether the distance between the centers of two adjacent indentions is too near
	Indenter	Check whether the indenter conforms to the requirements of the scale
		Check whether the clearance between the indenter and main shaft is removed
	Replace the indenter if damaged	

**Fig.1: Principle of Rockwell Hardness Test**



1. Indentation depth under preliminary test force  $F_0$ ;
2. Indentation depth under main test force  $F_1$ ;
3. Depth of elastic come-back after main test force  $F_1$  is removed;
4. Residual indentation depth  $h$ ;
5. Specimen surface
6. Measurement datum plane;
7. Position of indenter.

**Example: 59 HRC indicates that Rockwell hardness is 59 measured by C scale.**

### Range of Application

As per hardness range and size of the specimen, different indenters and loads can be selected and the hardness values can be indicated by different scales such as A, B and C scales for Rockwell hardness. The loads, indenters, values of the constant  $K$  and ranges of application are shown in **Table 2**.

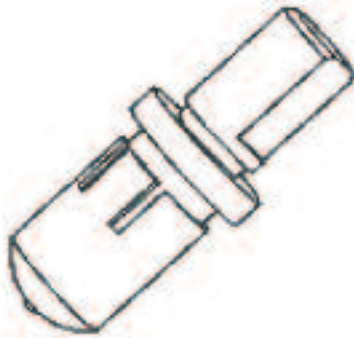
- **Scale A** is used to measure the metallic materials whose hardness exceeds 67HRC, such as tungsten carbide, hard alloy, hard thin slabs and surface hardened parts. The range of measurement is 20—85HRA.
- **Scale B** is used to measure the lower-hardness parts whose range of hardness shall be 25—100 HRB, such as non-ferrous metal and its alloy, annealed steel, etc. If the hardness of specimen is smaller than 25HRB,

the metal will begin to creep, the creep deformation will last a long time and the result will be inaccurate. If the hardness of specimen is larger than 100HRB, error will happen since the steel ball indenter is prone to deform and the depth of indentation is too small.

- **Scale C** is used for hardness test of specimens which are quenched or tempered, such as carbide steel, tool steel and alloyed steel. The range of measurement shall be 20—67 HRC. If the hardness of specimen is lower than 20HRC, the measurement is incorrect since it is too deep for the diamond indenter to penetrate into the specimen and the error will increase caused by the geometric shape of the indenter. If the hardness of specimen is larger than 67HRC, the diamond is easy to damage due to the large pressure produced by the sharp tip of the indenter.



**Fig.2: Diamond cone indenter**



**Fig.3: Steel ball indenter**

**Table 2: Usual scale for Rockwell Hardness**

Scale	Indenter (mm)	Test Force (kg)			Constant	Application Examples
		F0	F1	F		
A	Diamond cone indenter	10	50	60	100	Hard metal and alloy
B	Steel ball (ϕ1.588) indenter	10	90	100	130	Non-ferrous and soft metal
C	Diamond cone indenter	10	140	150	100	Structural and tool steel

**Table 6: Corrections to scale B for cylindrical specimen**

Specimen	Diameter of cylindrical specimen (mm)						
	6.4	10	13	16	19	22	25
Hardness	Correction						
0	12.5	8.5	6.5	5.5	4.5	3.5	3.0
10	12.0	8.0	6.0	5.0	4.0	3.5	3.0
20	11.0	7.5	5.5	4.5	4.0	3.5	3.0
30	10.0	6.5	5.0	4.5	3.5	3.0	2.5
40	9.0	6.0	4.5	4.0	3.0	2.5	2.5
50	8.0	5.5	4.0	3.5	3.0	2.5	2.0
60	7.0	5.0	3.5	3.0	2.5	2.0	2.0
70	6.0	4.0	3.0	2.5	2.0	2.0	1.5
80	5.0	3.5	2.5	2.0	1.5	1.5	1.5
90	4.0	3.0	2.0	1.5	1.5	1.5	1.0
100	3.5	2.5	1.5	1.5	0	1.0	0.5

## Hardness Value Correction

Since the measured value for convex specimen is lowered, the correction should be added. To the opposite, as for the concave specimen, correction should be deducted.

**Table 5: Corrections to scale C and A for cylindrical specimen**

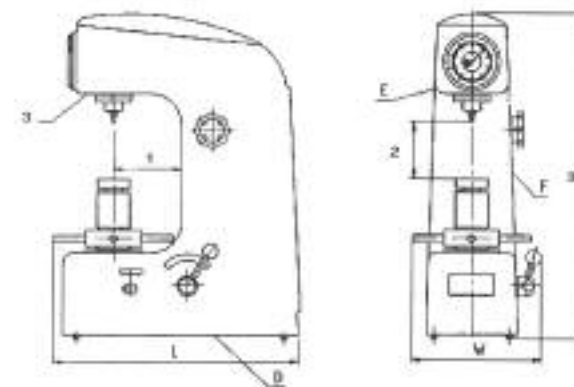
Specimen	Diameter of cylindrical specimen (mm)								
	6.4	10	13	16	19	22	25	32	38
Hardness	Correction								
20	6.0	4.5	3.5	2.5	2.0	1.5	1.5	1.0	1.0
25	5.5	4.0	3.0	2.5	2.0	1.5	1.0	1.0	1.0
30	5.0	3.5	2.5	2.0	1.5	1.5	1.0	1.0	0.5
35	4.0	3.0	2.0	1.5	1.5	1.0	1.0	0.5	0.5
40	3.5	2.5	2.0	1.5	1.0	1.0	1.0	0.5	0.5
45	3.0	2.0	1.5	1.0	1.0	1.0	0.5	0.5	0.5
50	2.5	2.0	1.5	1.0	1.0	0.5	0.5	0.5	0.5
55	2.0	1.5	1.0	1.0	0.5	0.5	0.5	0.5	0
60	1.5	1.0	1.0	0.5	0.5	0.5	0.5	0	0
65	1.5	1.0	1.0	0.5	0.5	0.5	0.5	0	0
70	1.0	0.5	0.5	0.5	0.5	0.5	0.5	0	0
75	1.0	0.5	0.5	0.5	0.5	0.5	0	0	0
80	0.5	0.5	0.5	0.5	0	0	0	0	0
85	0.5	0.5	0.5	0	0	0	0	0	0
90	0.5	0	0	0	0	0	0	0	0

## Technical Parameters

Main technical parameters are listed in **Table 3** and **Fig.4**.

**Table 3: Main Technical Parameters**

Items Code	Contents
Height (H)	630mm
Width (W)	238mm
Length (L)	466mm
Max. height of specimen with protection sleeve (B)	100mm
Max. height of specimen without protection sleeve (B)	170mm
Distance between the centre of indenter and wall of machine (A)	135mm
Net weight of hardness tester	65kg



**Fig.4: Schematic Diagram of Overall Dimensions**

Scale	Range of Hardness	Readings Allowance
1	20HRA < ~ ≤ 75HRA 75HRA < ~ ≤ 88HRA	±2 HRA ±1.5 HRA
2	20HRB < ~ ≤ 45HRB 45HRB < ~ ≤ 80HRB 80HRB < ~ ≤ 100HRB	±4 HRB ±3 HRB ±2 HRB
3	20HRC < ~ ≤ 70HRC	±1.5 HRC

## Descriptions of Mechanism Parts

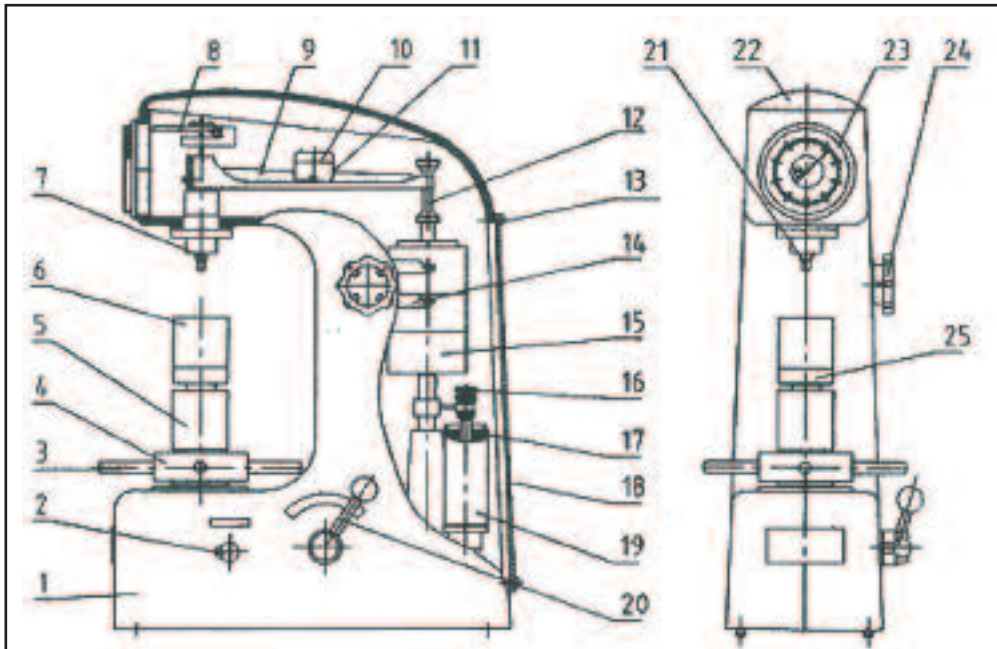


Fig.5: Schematic diagram of parts

- |  |                                       |
|--|---------------------------------------|
| 1. Machine body  | 13. Screw                             |
| 2. Loading handle  | 14. Weight changeover support bracket |
| 3. Elevation handle  | 15. Weight                            |
| 4. Hand wheel  | 16. Oil needle                        |
| 5. Elevating screw rod sleeve (elevating screw rod inside) | 17. Oil carpet                        |
| 6. Specimen to be tested                                   | 18. Rear cover                        |
| 7. Main shaft  | 19. Buffer                            |
| 8. Smaller lever   | 20. Unloading handle                  |
| 9. Larger lever  | 21. Indenter                          |
| 10. Adjustment block                                       | 22. Top cover                         |
| 11. Position mark  | 23. Indication dial gauge             |
| 12. Hoist ring   | 24. Load changeover handle            |
|  | 25. Worktable                         |

The test force applied onto the main shaft is amplified by the composition of weights and lever, i.e. indenter penetrates into the specimen surface under the guidance of buffer with the load amplified by the larger lever. At the same time when the indenter presses into the specimen, the vertical displacement produced by the main shaft is transmitted to the reading device through the measurement lever and hardness value is indicated therein.

- The machine body is the shell of the tester, where other parts are fitted directly or indirectly onto the machine body. Except the worktable (25), elevating screw rod (5) and operation

handle, all the other mechanisms are fitted inside the shell, convenient for cleaning.

- The total test force is composed of main test force plus preliminary test force. The preliminary test force is produced by the weight of parts including larger lever (9), and main shaft (7). The weights (15) are hanged on the larger lever through hoist ring (12), producing main test force by the lever principle.
- The top end-face of indenter (21) bears the total test force and the sharp tip penetrates into the surface of the object to be tested.

## Maintenance

### Cleaning and Lubrication

- Cover the tester with dust-proof guard when it is not in use for a long time.
- Fill adequate amount of machine oil into the contact face between elevating screw rod and hand wheel periodically.

### Oil filling to the buffer

If the pointer of indication dial gauge rotates rapidly at the beginning and then slowly later on when applying main test force, it means that the buffer is lack of machine oil. Lift up the oil carpet over the buffer and fill with clean machine oil No. 32. At the same time, pull and push the loading and unloading handles several times to let the piston move up and down so that the air inside the buffer is completely get rid of, until there is oil overflowing from the top when the piston falls down to the bottom (see Fig-22).

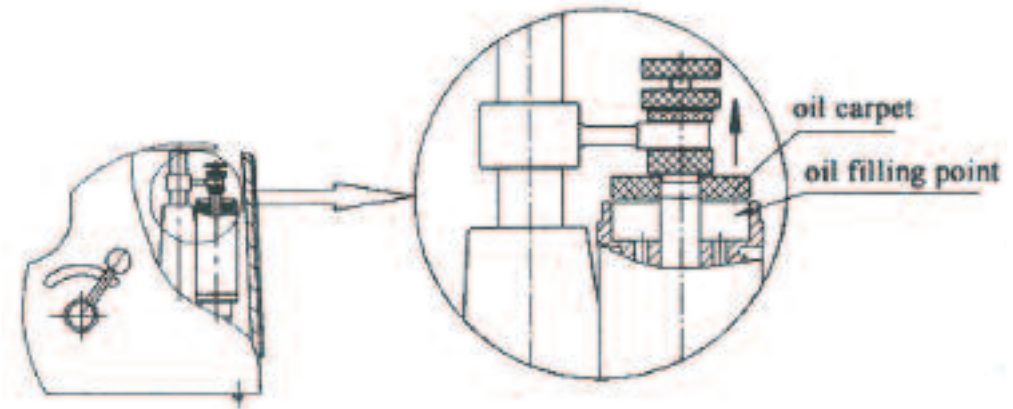


Fig.22: Oil Filling

### Calibration

Inspect the accuracy with the standard hardness block supplied with the tester.

- The tester should be calibrated regularly, usually the period can not be more than 12 months.
- Clean the worktable and standard hardness block and carry out the test on the working face of the block. It is not allowed to make a test on the binding bottom surface.

- If the reading error is too much, besides the conventional inspection listed in Table 7, check whether the binding surface of standard hardness block is burry. If yes, please polish it with edge stone.
- When carrying on the test on different spots on standard block, the test block should be pulled along the worktable rather than removed away from the worktable.



**Fig.20**

5. After the longer pointer stops rotating obviously, remove the main test force by pushing slowly (2 to 3 seconds) the unloading handle clockwise to the right-handed limit (see Fig-15). Get the readings from corresponding scales on the indication dial gauge. For diamond indenter, read from the black digits at the outer ring. As for steel ball indenter, read from the red digits at the inner ring. The

hardness value for this example shall be 45 HRC (see Fig-21). Turn the hand wheel to let the specimen down until the surface being tested is separated from the indenter. Move the specimen and carry on new test by repeating the above steps from 2) to 5). Please be advised that the binding bottom surface of specimen shall not be away from the worktable.



**Fig.21**

6. The protective sleeve of elevating screw rod is designed to prevent dust from the elevating screw rod. It shall be kept outside the elevating screw rod when the tester is not in use or the height of specimen is smaller than 100mm. When the height is over 100mm, it must be removed; otherwise the worktable will be propped up, resulting in invalid test.

**CAUTIONS:**  
During the step 4 and step 5, the load changeover handle should not be turned so as to prevent damaging the tester.  
After any item among indenter, specimen and worktable is replaced, the first test should be regarded invalid.

- The load changeover handle (24) can be turned to different positions, which simultaneously regulates the positions of weight changeover support bracket (14), resulting in different composition of weights which makes up three different total test forces such as 588N/60kg, 980N/100kg and 1470N/150kg.
- The loading handle (2) is to apply main test force.
- The unloading handle (20) can be pushed back as per the direction shown on the label,

removing the main test force. The application of main test force can be kept at certain speed by regulating the oil needle (16) of buffer (19), avoiding any impact.

- Test value can be read directly from the indication dial gauge (23) of measurement mechanism.
- The specimen support mechanism including worktable (25), elevating screw rod (5) and hand wheel (4) is used for bearing hardness blocks and the parts to be tested.

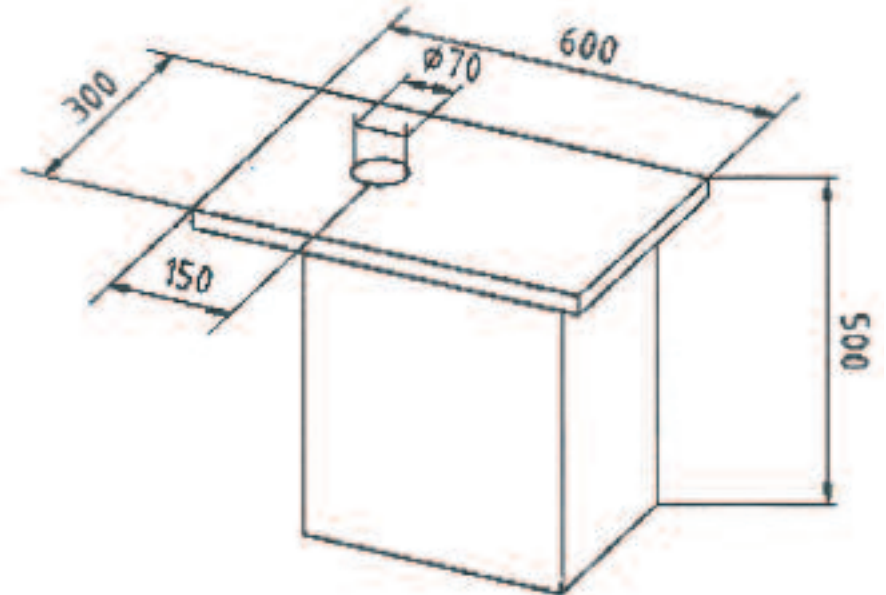
## Package Opening, Transportation, Installation and Commissioning

### Preparation

- The working surroundings of the tester should be clean and dry, free of corrosive gases.
- The working surroundings of the tester should be free of foreign mechanical vibration.
- The temperature of the working surroundings should be between°C 10 to 30°C.
- The test table (made by the buyer) should be built up with cements or metal, having certain

stiffness and strength as well as being capable to bear hardness tester and its auxiliary parts. Its surface should be fitted with a hole of 70mm for the elevating screw rod to pass through, as illustrated in Fig.6 (the sizes on the diagram are only for reference). The levelness of the surface should be within 0.2/1000.

- Enough space should be left around the tester for necessary installation, commissioning and maintenance.



**Fig.6: Schematic Diagram of Test Table**

## Package Opening

1. Remove the packing belt B around the package box (see Fig.7).
2. Pull out the wood screws which fasten the box shell with the bottom seat by the pliers and withdraw the box shell upwards.
3. Take out the bag of documents and sort out the operation manual (also packing list, certificate of quality).
4. Loosen the nut on the package hook fastening the box of accessory by the spanner, take down the package hook and box of accessory. Sort out the objects inside the box and verify whether all the parts in the packing list are available.
5. Remove the dust-proof cover.
6. Remove the four foundation bolts fastening the tester onto the bottom seat of package box by the spanners.

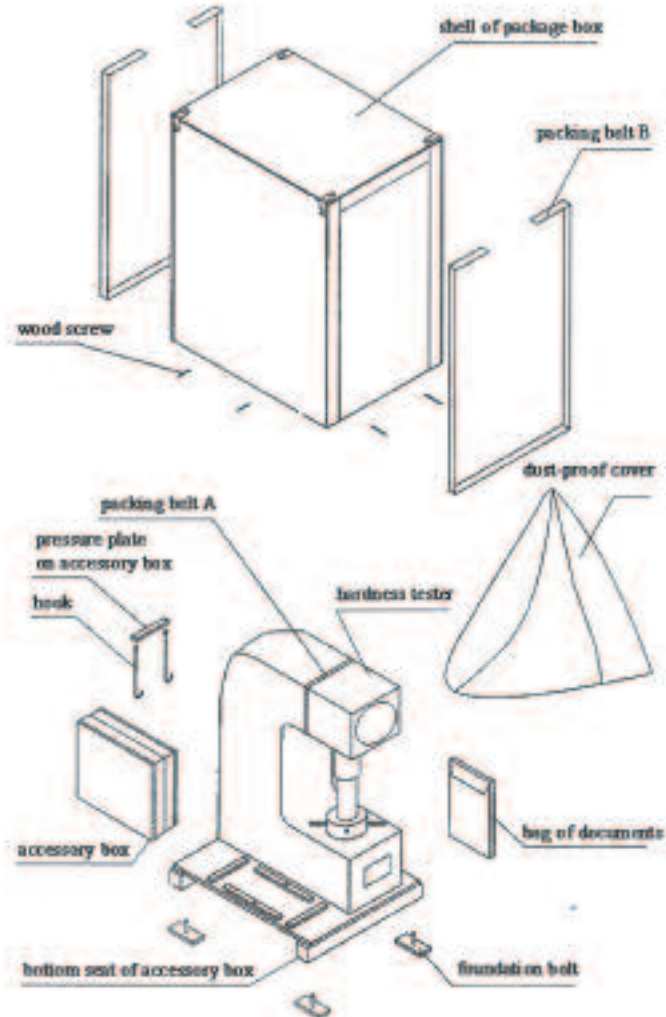


Fig. 7: Schematic Diagram of Test Table

## Testing Procedures

1. Clean the top end of elevating screw rod and both sides of worktable, place the worktable into the insertion hole of elevating screw rod. Proper worktable should be chosen according to the size of the parts to be tested.
2. Clean the binding surface of specimen and place it onto the worktable. Turn the hand wheel to lift up the worktable slowly to push up the indenter. No stop or reverse action is allowed from the start until the shorter pointer points to the red mark and the longer pointer point right upwards after three circles of clockwise turning. The allowance is  $\pm 5$  division lines. If it is more than 5 division lines, the spot should be invalid and repeat the test by choosing other spot.
3. Turn the outer shell of indication dial gauge until the longer pointer aligns with the long division line between Letter C and Letter B (see Fig.19, either anticlockwise or clockwise turn is all right).
4. As per the loading direction on the loading label, pull the loading handle (2) towards the front of machine body slowly (around 4 seconds) up to the left-handed limit position (see Fig.15), then the main test force has been applied and the longer pointer will rotate (see Fig.20).

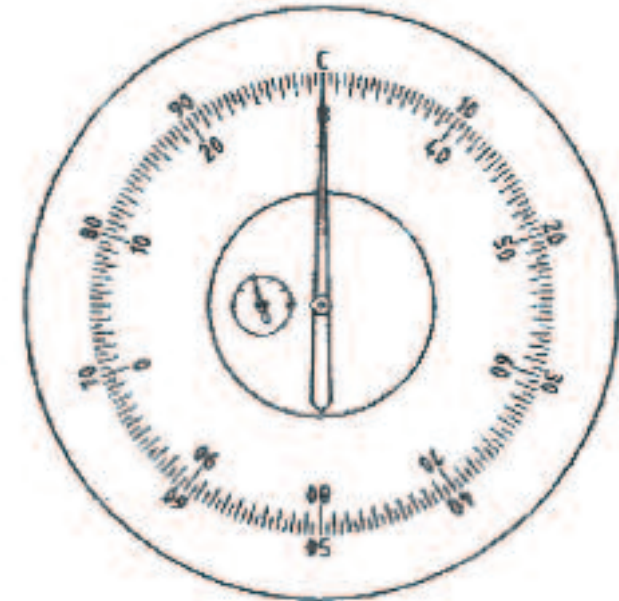
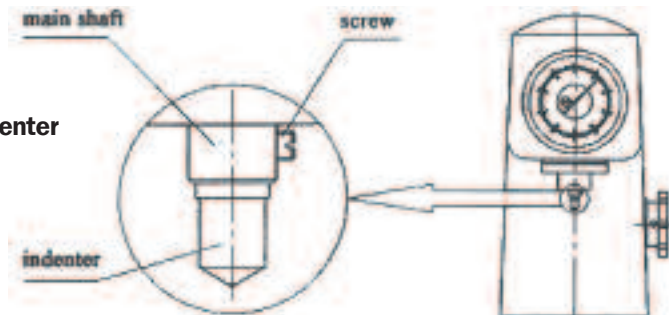


Fig.19



**Fig.18 Install the indenter**

**The specimen should meet the following requirements:**

- a. It should have certain size and thickness. The distance between two centres of adjacent indentions and that between the centre of indention and edge of specimen should be more than 3mm. The minimum thickness should be no less than 8 times to the depth of indention. After test, the binding surface of the specimen should be free of obvious hint of deformation. The minimum thickness is subject to the quality of material and the load selected. The table 4 is only a reference.
- b. The surface to be tested should be flat generally. If it is a curved face and the radius of curvature is not too big, the test result should be corrected. The correction of cylindrical specimen is included in Table 5 and Table 6.

- c. The surface of specimen should be polished with the finish no less than . The polishing should not influence the hardness, i.e., no hardening or tempering phenomena. The surface finish of binding face should be no less than. The surface to be tested, binding surface and worktable surface should be kept clean. The specimen shall be placed on the worktable reliably and no movement should happen.
- d. Be sure that the test force applied should be perpendicular to the surface to be tested. To test the specimens with curved shapes or other abnormal shapes, specialized anvil should be adopted and proper position should be selected. For example, V-shaped anvil shall be used for cylindrical specimen. To test the specimens hollow inside, much attention should be paid not to produce deformation by test force, or the measured hardness value is incorrect.

**Table 4: Minimum Thickness of Specimen**

Scale	Hardness Value (HR)	Minimum Thickness (mm)	Scale	Hardness Value (HR)	Minimum Thickness (mm)
A	70	0.7	B	80	1.0
	80	0.5		90	0.8
	90	0.4		100	0.7
B	25	2.0	C	20	1.5
	30	1.9		30	1.3
	40	1.7		40	1.2
	50	1.5		50	1.0
	60	1.3		60	0.8
	70	1.2		70	0.7

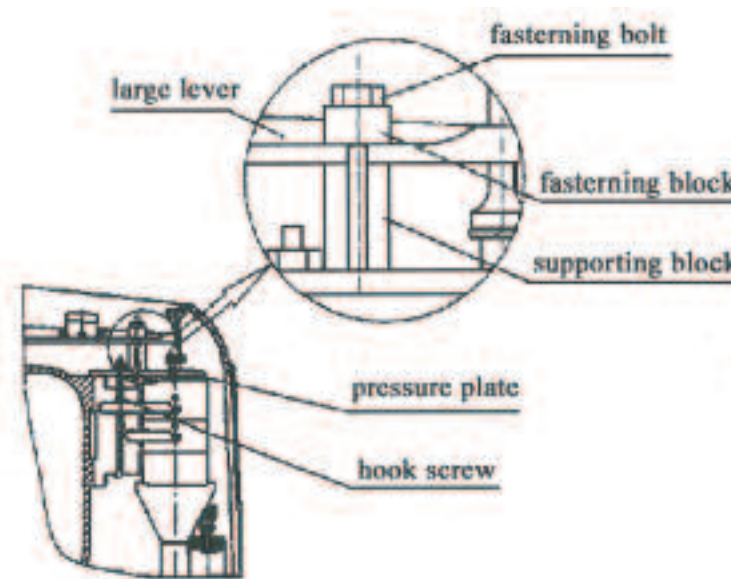
**Cautions For Transport**

- Don't try to move the tester by oneself to prevent any damage to the tester or personnel injury since the equipment is too heavy. Therefore the machine should be moved by at least two experienced technicians.
- During transportation, the slant of the axial line between the indenter and elevating screw rod against the vertical line should not be over° 15.
- During transportation, the contacts between the porter and the tester should be limited to Face C, D, E and F only. Don't touch other faces and other parts of the tester so as not to influence the accuracy of the tester (see Fig.4).
- During transportation, the tester should be handled gently to avoid any collision or impact.

**Installation and Commissioning**

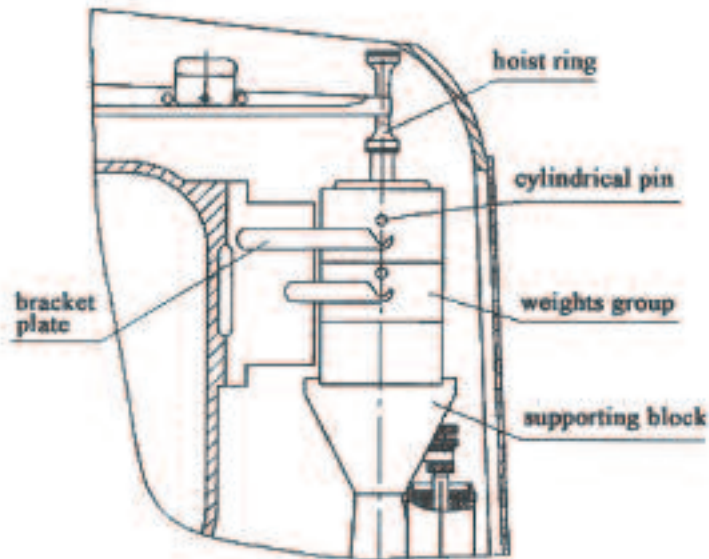
Before installation and commissioning, the spanner, level and worktable should be standby.

1. Place the tester onto the prefabricated test table and the elevating screw rod of the tester should be fall into the hole of the test table.
2. Remove the packing belt A on the tester (see Fig.7).
3. Take down the top cover (22), remove the screws (13) on the rear cover and then remove the rear cover (18).



**Fig.8: Removing the fastening block of larger lever**

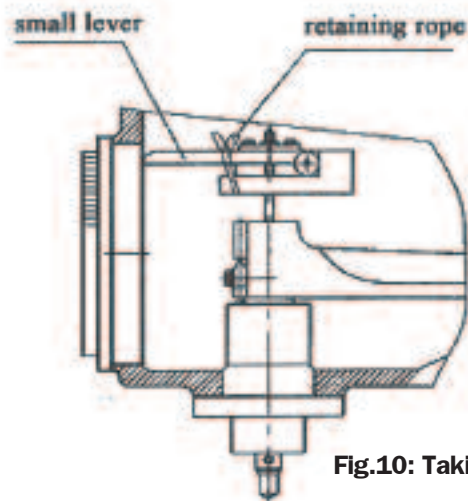
4. Remove the fastening bolt by the spanner, take down the fastening block and supporting block (see Fig.8).
5. Loosen the nut on the hook screw by a spanner, remove the hook screw and then pressure plate fastening the weights (see Fig.8).
6. Hold the hoist ring with hands, lift up the group of weights slowly and at the same time remove the supporting block. Place them lightly so that the cylindrical pin on the weights group just falls onto the groove on the bracket plate which brackets the weights group (see Fig.9).



**Fig.9: Removing the supporting block**

7. Take off the retaining rope binding the smaller lever (8) (see Fig.10).
8. Turn the hand wheel (4) anticlockwise to let the elevating screw rod (5) down and then remove the cushion block of the indenter (see Fig.11). In case that the elevating screw rod does not descend by turning the hand wheel, but to the opposite, the hand wheel rises with the

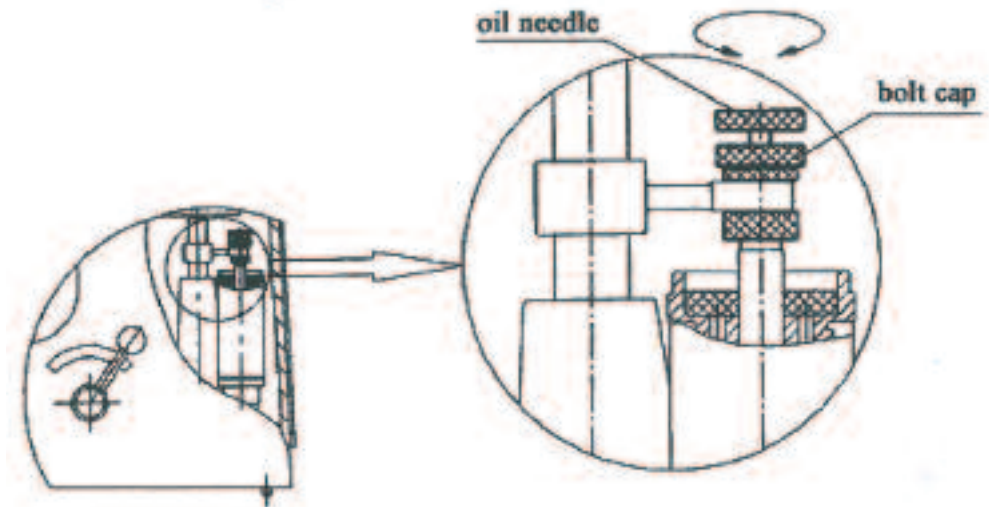
elevating screw rod and the cushion block not removable, maybe the elevating screw rod and its seat (under the hand wheel) are adhered together by anti-rust oil. This can be solved by rotating the hand wheel anticlockwise to rise up to 20mm or so, pressing down the hand wheel by hand with force so that the elevating screw rod and its seat are disengaged.



**Fig.10: Taking off the retaining rope**

- c. Place the standard hardness block 40~50HRC onto the worktable.
- d. Turn the hand wheel (4) so that the hardness block raises the indenter until the shorter pointer points to red mark, and then the preliminary test force has been applied.
- e. As per the loading direction on loading label, pull the loading handle (2) slowly towards the front of the machine body (approximately 4 seconds) to the limit position, and then the main test force has been applied (see Fig.15).

- f. Keep eyes on the longer pointer of indication dial gauge and make sure that it takes 4 to 8 seconds for it to start turning till stop. Otherwise, regulate it by turning oil needle as follows: First, loosen the bolt cap on the buffer (see Fig.17), turn the oil needle lightly. To turn it anticlockwise, the loading speed will rise, while to turn it clockwise, the loading will slow down. Repeat the above steps until everything is ok, and then tighten the bolt cap.



**Fig.17: Regulating the oil needle**

**Test Force Selection**

Turn the load changeover handle until the number of selected test force points to the red mark (see Fig.16).

**Note:** When changing the test force, the unloading handle must be at the unloading position (see Fig-15, i.e. at the limit position on the right hand). Otherwise it will cause damage to the hardness tester.

**Install indenter (see Fig.18)**

The tester is equipped with a steel ball indenter when exiting works. The following steps should be followed when reinstalling:

- a. Put on the indenter and tighten it slightly to the extent that it will not fall down.
- b. Place the standard block onto the worktable.
- c. Turn the hand wheel to apply preliminary test force.
- d. Pull the loading handle leftwards to apply main test force on the indenter (see Fig.15).
- e. Tighten the screw. That's all for the installation.

### Regulate the loading ratio of main test force

- a. Make sure that the unloading handle (20) is at the position of unloading. Otherwise, turn it to unloading position slowly (2 to 3 seconds or so) as per the unloading direction shown on the unloading label (see Fig.15).

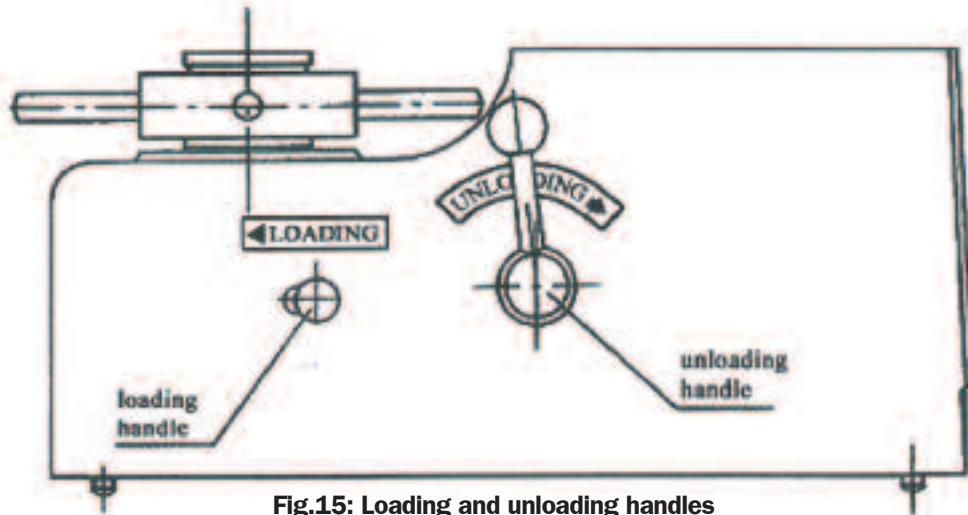


Fig.15: Loading and unloading handles

- b. Turn the load changeover handle (24) to the position of 150kgf and make sure that the Number 150 on the handle aligns with the red mark, as shown in Fig.16.

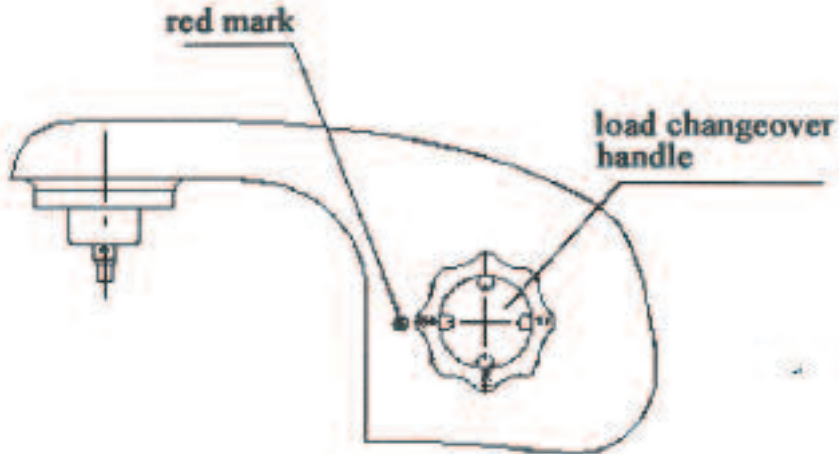


Fig.16: Test force selection

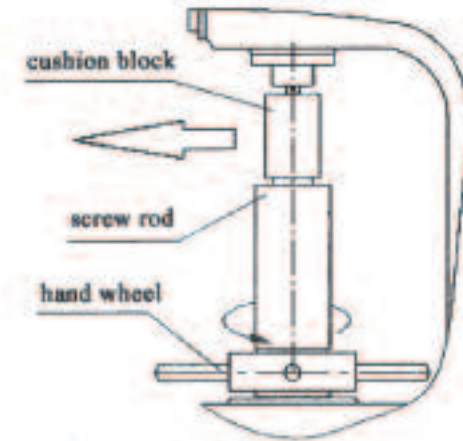


Fig.11: Removing the cushion block of the indenter

9. Remove the protective sleeve around the elevating screw rod, clean the elevating screw rod and hand wheel off anti-rust oil with kerosene, fill adequate amount of lubricants into the contact positions between the elevating screw rod and hand wheel, and then reassemble the protective sleeve.
10. Make sure that the adjustment block on larger lever (9) is located between the two red marks (see Fig.12). Otherwise place it to the correct position.

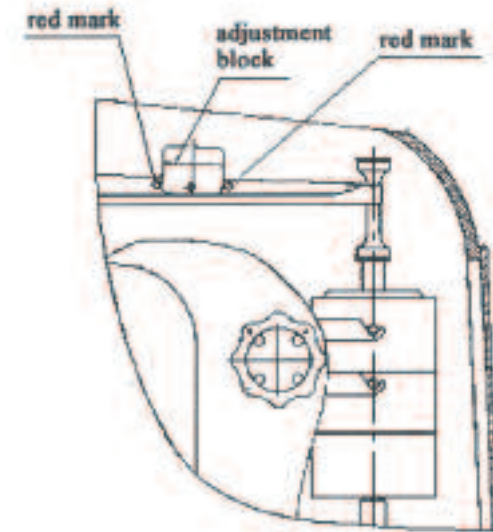
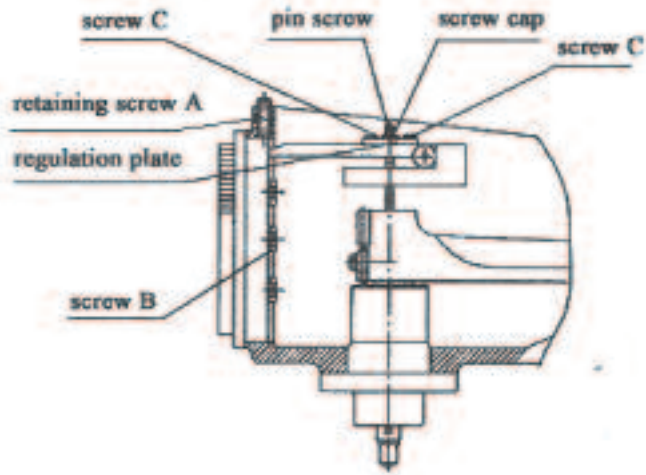


Fig.12: Checking adjustment block



**Fig.13: Regulation plate and pin screw**

11. Place the larger anvil into the hole over the elevating screw rod and the level meter onto the anvil. If necessary, insert metallic cushion into the bottom seat of machine body so that the levelness in two directions are within 0.2/1000.

12. It may happen that the indication dial gauge (23) is loose during transportation. In this case, first loosen the retaining screw A on machine body, remove the indication dial gauge, tighten the three screws B at the back of the dial gauge and put the dial gauge on again (see Fig.13).

13. Turn the knurled chrome-plated shell of indication dial gauge (23) to make the "C" point right on the top. Should the larger pointer not point to "C" as shown in Fig.14, it shall be adjusted as follows: loosen the screw cap, adjust the pin screw (see Fig.13) until the larger pointer points to the "C" (see Fig.19), and then retighten the screw cap.

14. If the reading error exceeds the allowance due to transportation, regulate as follows (see Fig.13):

- Make test with the higher hardness block and lower hardness block of HRC separately. If the reading is on the high side, loosen the two screws C on the regulation plate and

move the regulation plate lightly rightwards (pay attention not to move the pin screw in the middle of regulation plate), then retighten screws C. If the reading is still on the high side, repeat the above steps once again until the reading is within the range of allowance. If the reading is on the low side, move the regulation plate leftwards as per above-mentioned method.

- After calibrated with both higher hardness block and lower hardness block of HRC, in general, HRA and HRB scale will also be precise.
- While carrying out the above adjustment, the following test should not be done until the two screws C are retightened every time when the regulation plate is moved.
- The above method is only suitable for minor regulation when the reading error is within  $\pm 5$  HRC or  $\pm 5$  HRA. If slight error is found for scale B, it may be due to the steel ball. Replace the steel ball inside the steel ball indenter (see Fig.2) and try again.

15. Put on top cover (22) and rear cover (18).

## Normal Operation

- Before test, the kind of scale has to be determined upon the specimen. The following operation takes scale C as an example without specific notice, i.e. to test with diamond cone indenter and total test force up to 150kgf. It can be referred to for other scales.

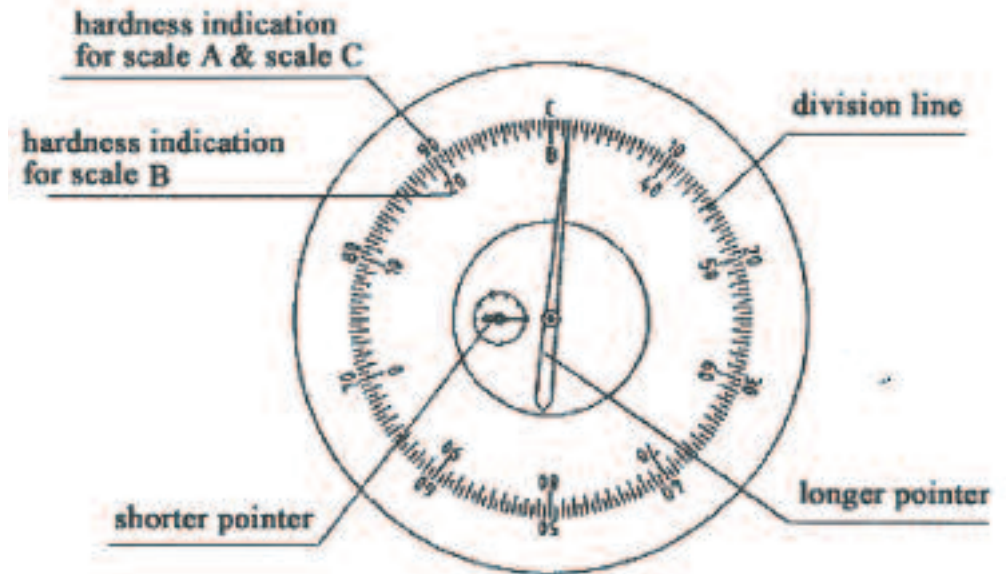
### Preparation prior to normal operation

First of all, spend some time on studying the functions of every parts of the indication dial gauge, where there are hardness readings, division lines, longer pointer, shorter pointer, etc. (see Fig.14).

- Black division lines are for hardness indication. The black digits at outer ring are for hardness indication of scales A and C while red digits at inner ring are for scale B. Different scales can be composed of by changing the indenter and the weights (for detail, please refer to Table 2).

- The shorter pointer indicates the load of preliminary test force.

- The longer pointer indicates the hardness value of tested specimen. The letters B and C are the symbols of scales. The position of Letter C is the zero point of division value of scale C or A. The position of Letter B is that of division value 30 for scale B.



**Fig.14 Schematic diagram of indication dial gauge**